

# EXTERIOR SCREEN FABRICS

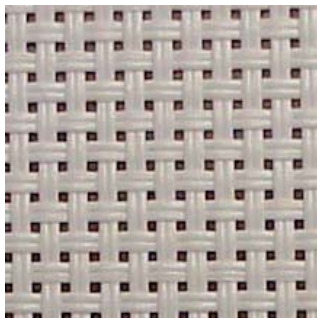
## Mesh vs. Acrylic Introduction

SUNAIR® offers the best mesh and acrylic fabric for your screen. More often a mesh fabric is needed because the customer desires solar protection, and still maintaining a view out of the window when the shade is lowered. Sunair® offers mesh fabrics from both Mermet, and Ferrari. Both Mermet and Ferrari are mesh fabrics that offer both exceptional transparency and sun blocking capabilities.

**Ask your SUNAIR® dealer which mesh or acrylic fabric is best for your application.**



Soltis 86 (14% open)



14 % open mesh



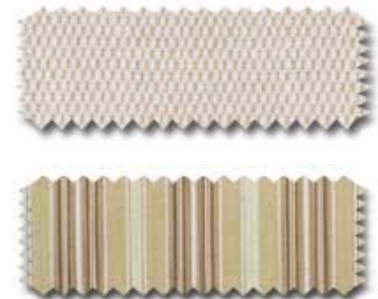
Natte 4500 (14% open)  
Satine 5500 (6% open)



6 % open mesh



Acrylic Solids  
& Stripes



Acrylic solid & stripes

### **Darker vs. lighter mesh colors:**

Because darker colors absorb light, darker colors like Bronze, Black, and Charcoal will allow better visibility through the closed fabric screen to the outside. This is important if you desire to have a nice view of the exterior through the screen fabric when it is extended. Darker colors also offer better solar protection than lighter colors.

Lighter colors are more neutral on the house, but will offer less solar protection and reflect more light. Lighter colors are therefore harder to see through when the screen is lowered.



AWNINGS UNLIMITED INC.  
P.O. Box 1068  
7785 Rt. 175  
Jessup, MD 20794

© 2007 Awnings Unlimited Inc.