

# SC4000 MASTERSHADE®

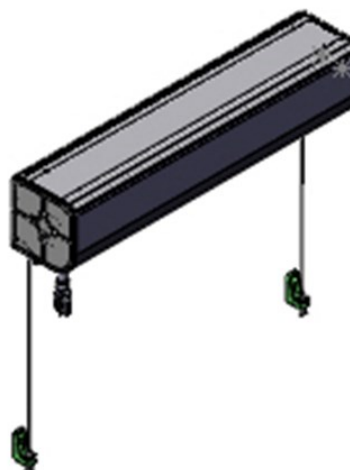
## Exterior Rolling Screen / Large Cassette



The SC4000 Mastershade® is an exterior rolling screen available with standard cable guides or with the optional magnetic lock and cable guide system. A specially designed horizontal weighted hem bar is used for each version. With the added optional magnetic lock device attached at each end, the magnetic base brackets keeping the entire fabric taut when the screen is lowered. The SC4000 utilizes a fully extruded aluminum cassette which is approximately 5 1/4" high x 5 3/16" deep.

Type	Standard Frame Colors	Standard Widths	Standard Heights	Recommended Applications	Recommended Fabrics
Screen Exterior Retractable	9 standard Sunair colors	Through 20'/24' wide Height will vary with width	Through 14' high Depending on width, Fabric & Type	Residential & Commercial Windows	Various Mesh & Acrylic Fabrics

- Larger standard box screen.
- Available with standard cables or magnetic locks.
- Gear or Motorized operation.
- Cassette bolts to ceiling or wall without brackets.



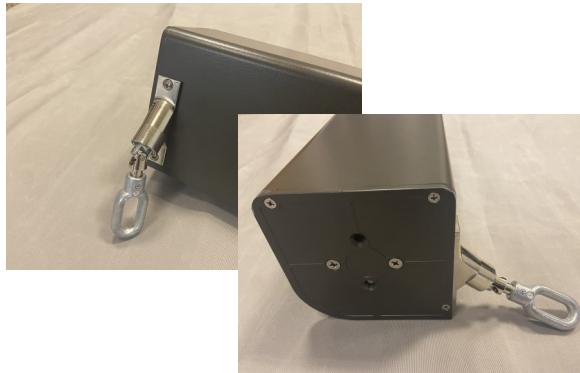
Revised 02/15/2023

# SC4000 Mastershade® Installations



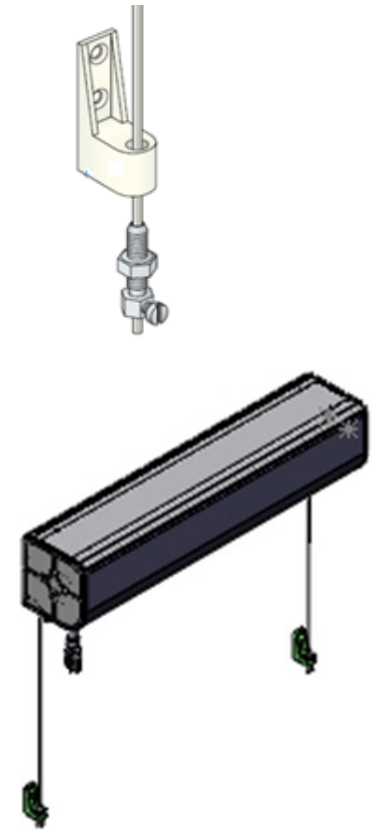
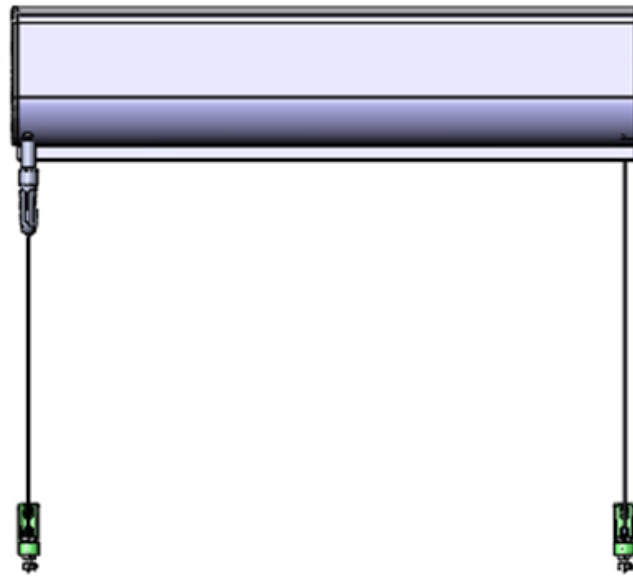


# SC4000 with standard cables

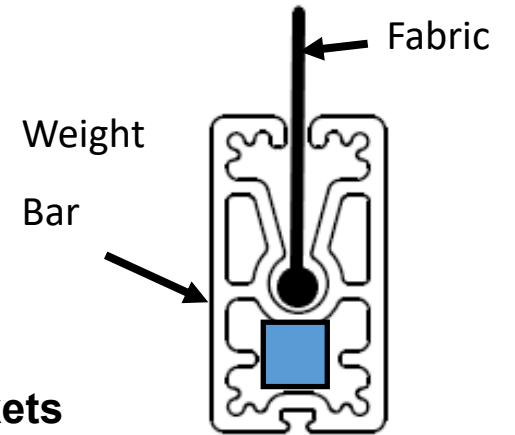
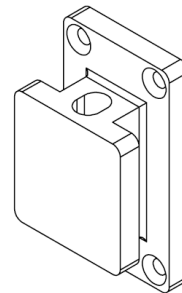


Back of cassette gear loop.  
Ceiling mount only

## Wall mounted screens with standard cable brackets

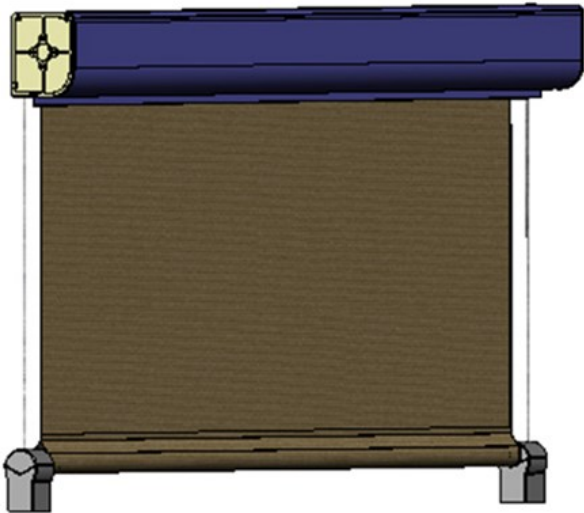


Cable hem bar end bracket

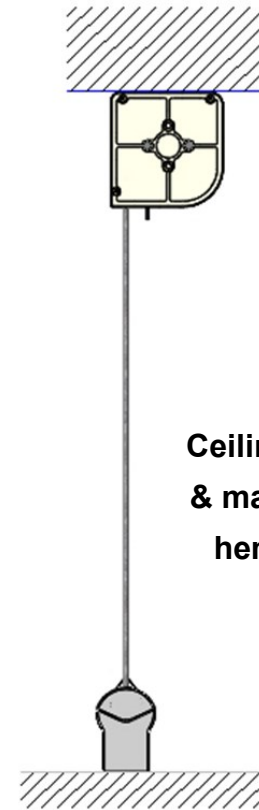
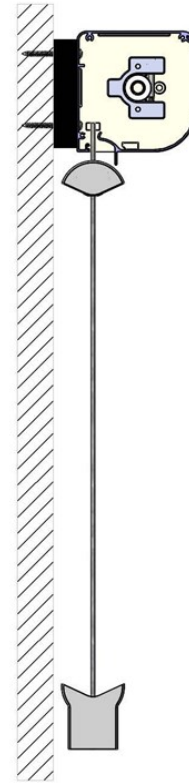


Hem Bar

## SC4000 with magnetic lock cables



Wall mounted unit with retracted hem bar & magnetic locks.



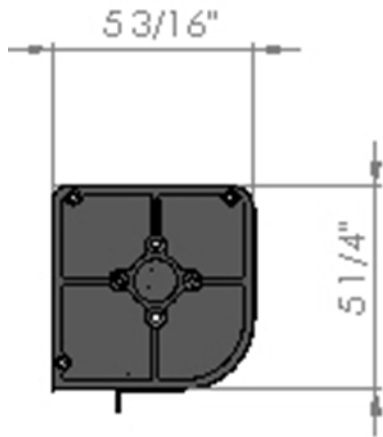
Ceiling mounted unit & magnetic lock and hem bar lowered.



The optional magnetic locks below keeps the screen fabric taut when the screen is in its lowered position. If a wind gust lifts the hem bar, the magnetic lock will release the screen fabric from the pressure and then the magnetic lock will automatically reposition the hem bar back into the lock.\*

\* Note: The magnetic device does not guarantee that strong winds will not damage the unit and is not a substitution for using caution.

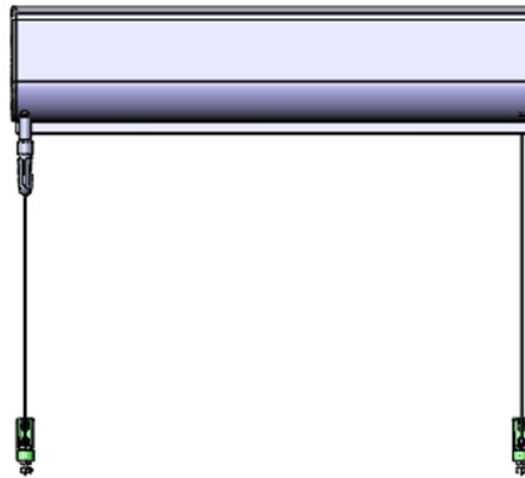
## MEASURING SC4000 with standard cables:



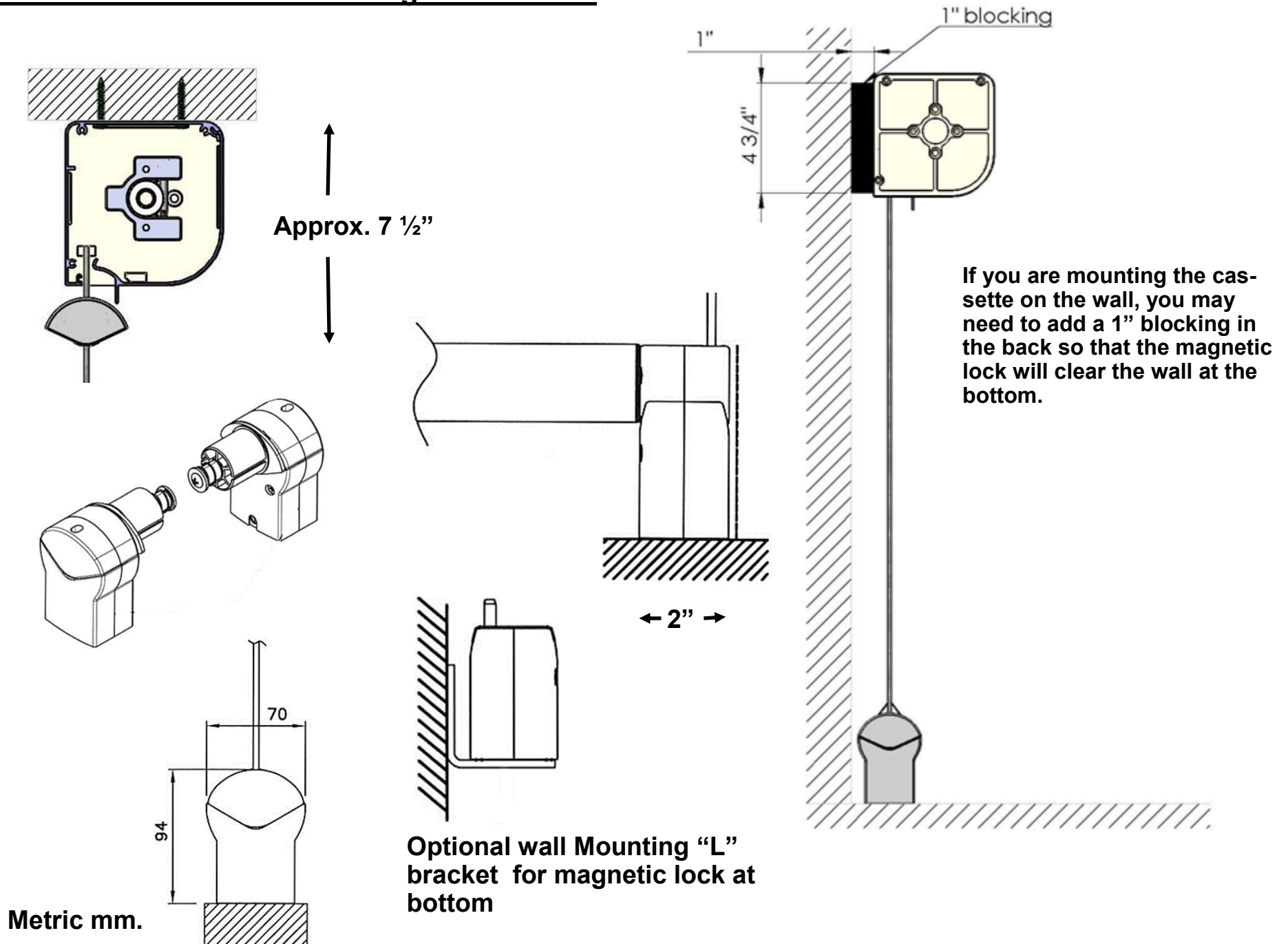
**Width:** Determine the desired width. The width you order is the measurement end of cassette to end of cassette. If mounting in front of a window opening, add 3" to the width of the window glass opening on the idler end and 4" on the gear or motor end for a total seven (7") to properly cover the opening or glass area with fabric.

**Height:** Determine the height of the opening or window. The fabric or screen mesh should cover the height of the window. The height of the delivered screen includes the cassette. To calculate the height of the shade, add the height of the cassette ( $5\frac{1}{4}$ ") and the standard or magnetic lock height / hem bar (approx.  $2\frac{1}{2}$ ") to the total height of opening to be covered if mounted in front of a window. If mounting on an open porch, allow about  $7\frac{1}{2}$ " for the cassette assembly when the screen is retracted. See below and next page)

Note: Pay attention to casement windows that will interfere with the hem bar when the shade is retracted (In such a case, mount the top of the cassette 7" above the opening window edge). In addition, if the hem bar needs to go above the glass area as not to be seen through the glass when the shade is raised, it is important to add the  $7\frac{1}{2}$ " to the opening height as well. The SC4000 can be ordered in any increments in both the width and the height.



## MEASURING SC4000 with magnetic cables:





# BENEFITS OF SOLAR SCREENS



Screen fully lowered down

- **Reduces indoor temperatures and saves energy cooling your space.**
- **Cuts down on solar glare while retaining your view depending on mesh fabric type and openness factor.**
- **Cuts down on interior fading of floors, carpets and furniture.**
- **Can offer complete black out privacy blocking all light.**



Screen partially lowered down

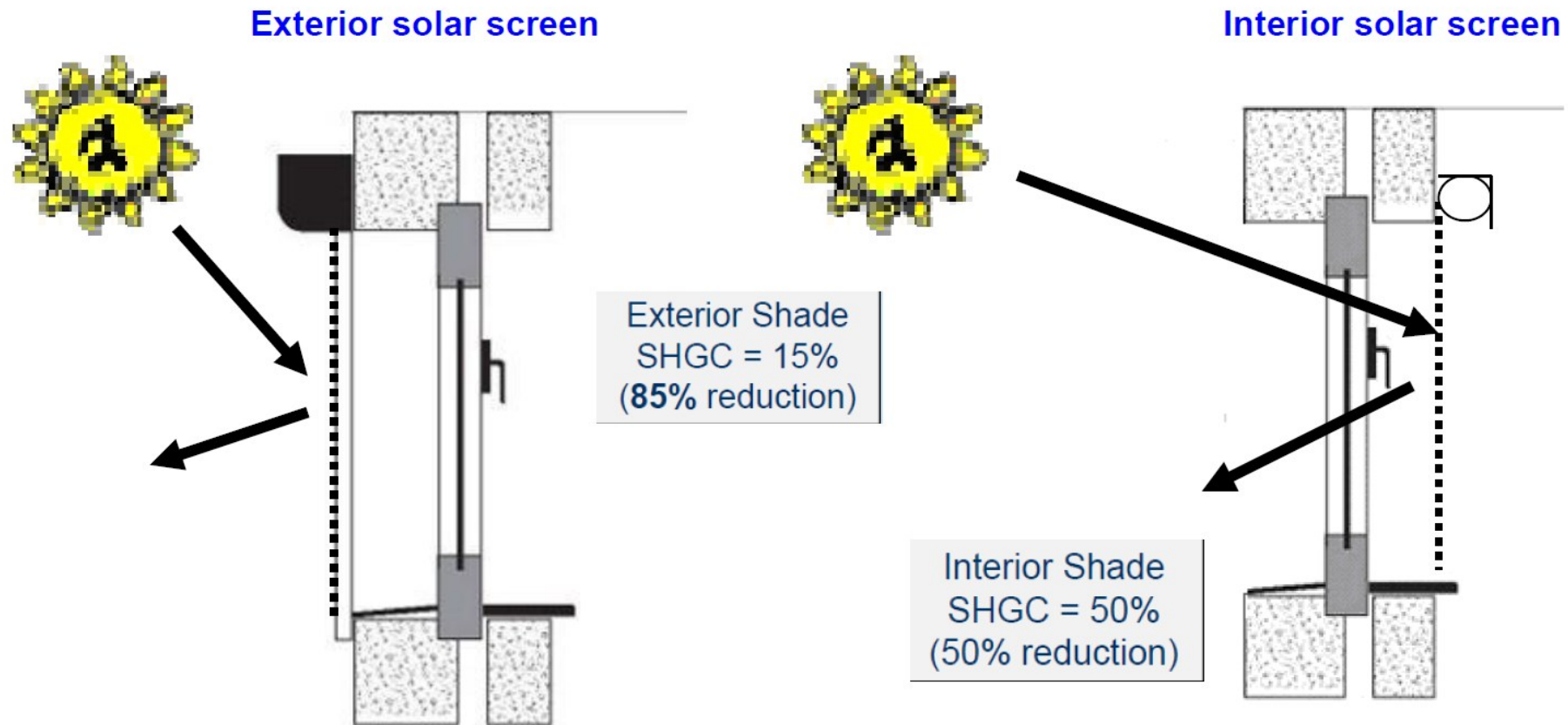


Screen partially down showing glare



Screen fully down and no glare

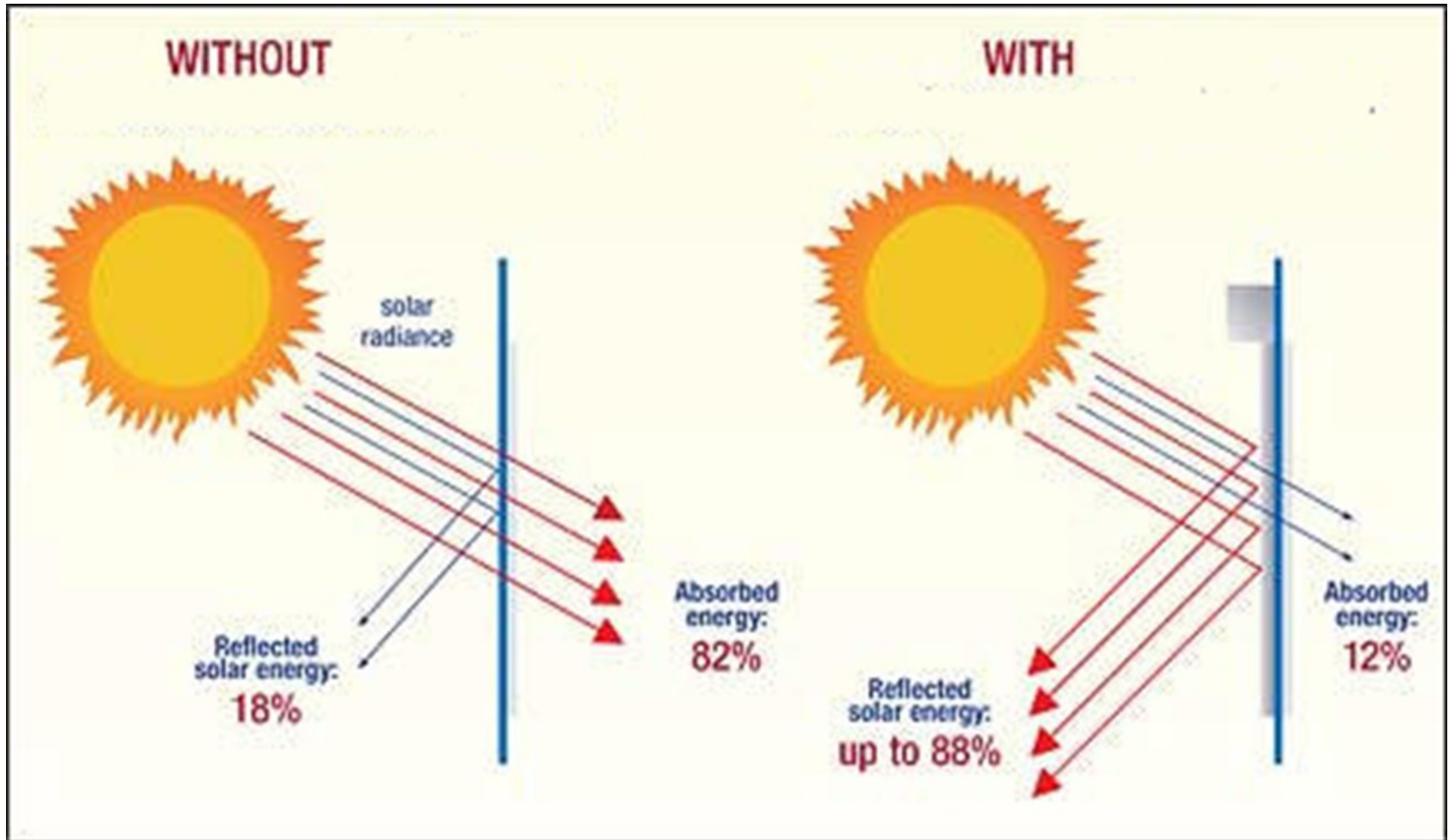
## BENEFITS OF SOLAR SCREENS cont:



Solar screens can be installed both on the exterior and interior applications of residential and commercial spaces. The benefit with exterior solar screens is that the fabric blocks the sun before it enters the home or space through the glass. Sometimes it is not feasible to install an exterior screen. In such a case, interior screens offer a good alternative. Interior screens are also more economical.



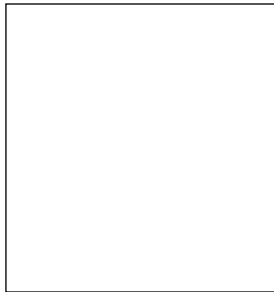
# BENEFITS OF EXTERIOR SOLAR SCREENS:



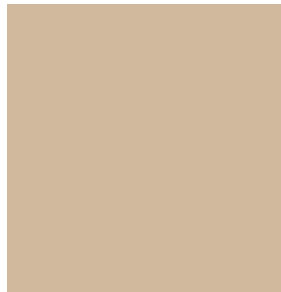
# FRAME COLORS ( STANDARD )

## Screens\*

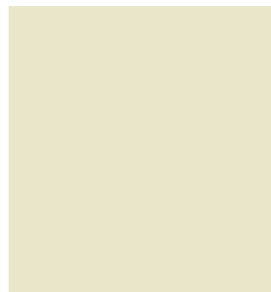
\*Note: See each model technical page for available frame colors. Available interior screen colors are different than depicted below ( see Interior screens).



**WHITE Gloss**  
Ral 9010



**MOCHA**  
Semi Gloss



**DESERT SAND /  
IVORY Gloss**



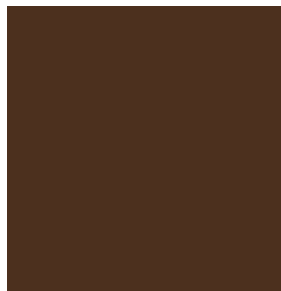
**BLACK Gloss**  
Ral 9005



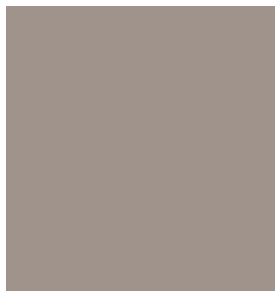
**BRONZE**  
Coarse



**GREY Gloss**  
Ral 7040



**BROWN Gloss**

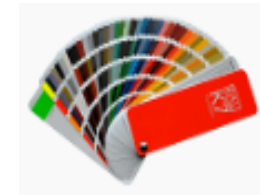


**TAUPE Gloss**



**GREEN Gloss**  
Ral 6005

### OPTIONAL



**FULL RAL COLOR  
RANGE / EXTRA COST**

NOTE: All these colors except Green Ral 6005 and Desert Sand / Ivory are “super durables” which offer better durability compared with standard polyesters powders.

**NOTE: ACTUAL FRAME COLOR MAY VARY FROM DIGITAL IMAGES**





**TEMPOTEST**  
ITALIAN PERFORMANCE FABRICS



## ACRYLIC FABRIC COLLECTION



Fabric covers sewn with Tenara thread.



5 Forest Green



7 Moss Green



8 Medium Green



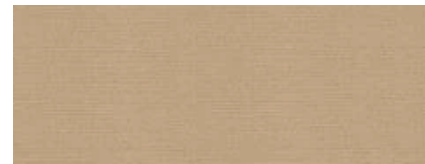
11 Red



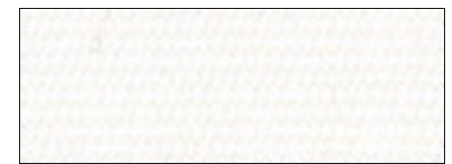
12 Yellow



13 Ocean Blue



14 Toast



15 White



24 Black



33 Forest Green / White



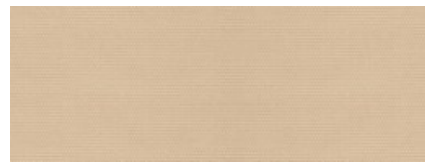
35 Red / White



37 Yellow / White



47 Brown / Stone



52 Tan



53 Pale Peach



73 Burgundy





**75 Navy Blue**



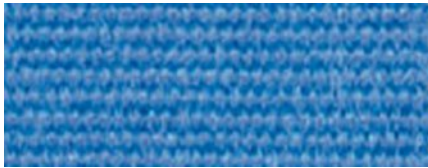
**79 Grey**



**81 True Brown**



**84 Dark Terracotta**



**87 Fancy Blue**



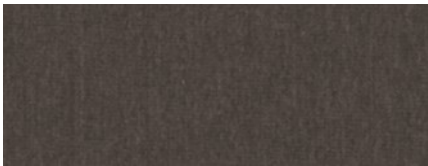
**101 Elite Toast**



**102 Cappuccino**



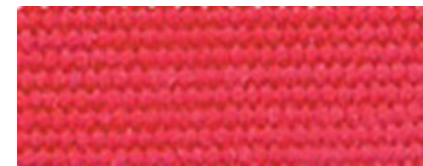
**106 Toffee**



**107 Textured Dk. Grey**



**242 Grey / White**



**426 Terracotta**



**439 Dark Grey / White**



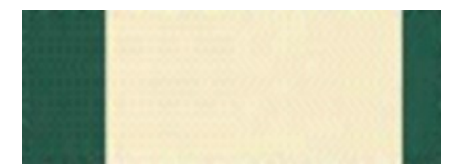
**809 Cream / Green**



**878 Beige / White Speckled**



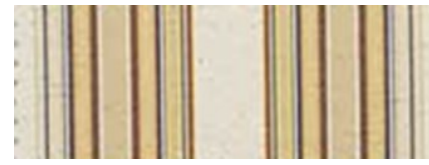
**926 Taupe Classic Solid**



**931 Green / Cream Wide**



**969 Grey Fancy Stripe**



**1101 Beige / Stripe Fancy**



**1120 Brown/ Beige Fancy**



**1150 Rust / Green Multi**



**116/15 Medium Blue / White**



**1243 Yellow Multi**



**1302 Sage Tweed**



**1330/512 Carbon Stitch**



**15/1 Beige**



**15/14 Raw**



**15/79 Stone**



**4015/91 Raw Speckled**



**407/11 Burgundy Tweed**



**407/13 Blue Tweed**



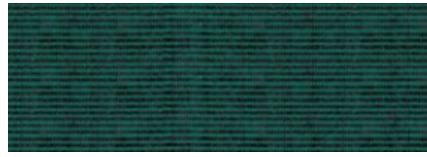
**407/14 Toast Classic Tweed**



**407/16 Moss Classic Tweed**



**407/3 Green Classic Tweed**



**407/6 Green Tweed**



**407/79 Pepper Grey**



**407/926 Grey Classic Tweed**



**4215/15 Textured Tan**



**5000/57 Cocoa Stripe**



**5001/1 Green Graduated**



**5001/13 Blue Graduated**



**5001/7 Moss Graduated**



**5001/73 Burg/Grey Graduated**



**5009/1 Beige / Tan Stripe**



**5009/14 Brown / Tan Stripe**



**5011/11 Brick/Natural Fancy**



**5011/57 Tan / Brown Fancy**



**5011/7 Tan / Green Fancy**



**5071/7 Natural/Moss Graduated**





**5072/86 Brown/Stone Fancy**



**5118/62 Yellow / White Fancy**



**5144/14 Pastel/Natural Fancy**



**5167/11 Red / Grey Fancy**



**5167/2 Blue / Grey Fancy**



**5167/5 Green / Grey Fancy**



**5173/12 Yellow / Grey Stripe**



**5304/15 Rose / Grey Fancy**



**5347/58 Grey Wheat Multi**



**5347/79 Platinum Grey Multi**



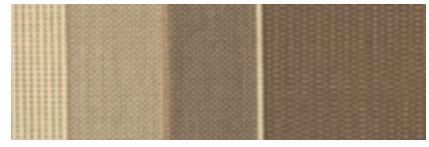
**5348/58 Beige / Wheat Multi**



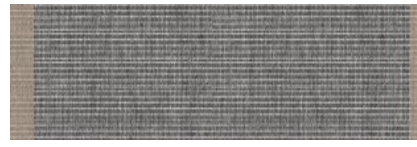
**5348/79 Grey / Slate Multi**



**5349/106 Brown Cream Stripe**



**5349/930 Beige / Brown Classic**



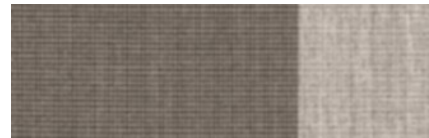
**5369 Charcoal / Brown**



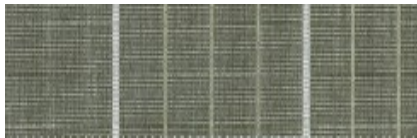
**5370 Beige / Grey**



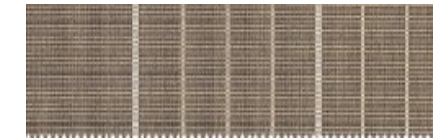
**5371/727 Grey / Black Stripe**



**5374 Smoke / Grey Stripe**



**5396/78 Green Tweed Stripe**



**5396/930 Hazelnut Stripe**



**5396/97 Charcoal Tweed Stripe**



**5397/97 Grey / Black Graduated**

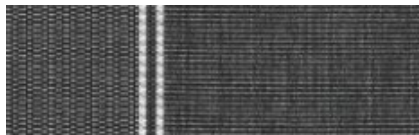


**5398/107 Carbon Blue Blend**

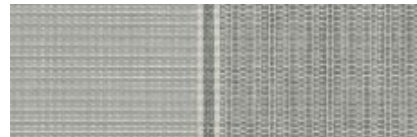


**5398/930 Dune / Brown Striped**





5399/107 Drk. Grey Tweed



5399/15 Lgt. Grey Stripe



5399/52 Sesame Tweed  
Stripe



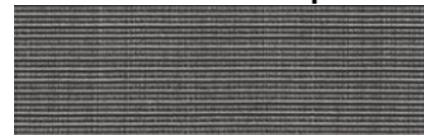
5399/94 Stone / Grey  
Tweed



5406/52 Coriander Tweed



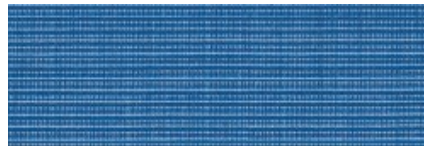
5406/94 Textured / Desert  
Beige



5407/107 Charcoal /  
Stone Tweed



5407/15 Textured Silk  
Grey



5407/17 Sky Tweed



5407/52 Sesame Tweed



5407/94 Desert Grey  
Tweed



633/79 Grey/ Black Fancy



634/51 Grey / Natural Fancy



634/97 Green / Tan Fancy



635/11 Cranberry/Natural F.



636/10 Grey / Blue Graduated



636/12 Yellow Graduated



636/14 Brown Elite Stripe



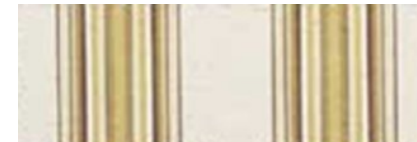
636/5 Green / Beige Fancy



636/84 Terracotta Graduated



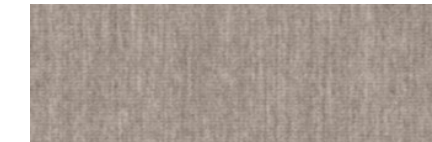
638/5 Green Grey Fancy



639/99 Tan / Natural Fancy



641/10 Blue / Beige Fancy



727/15 Textured Med. Grey



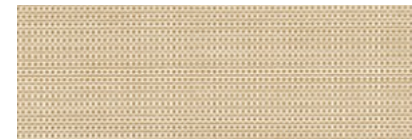
**739/701 Sage / Beige Fancy**



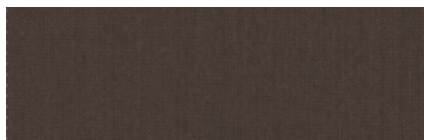
**769/75 Cream / Blue Fancy**



**782/14 Beige Classic  
Solid**



**873/151 Dune Tweed**



**873/2 Textured Cocoa**



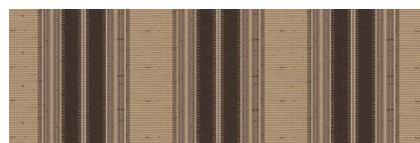
**939/94 Grey Elite Stripe**



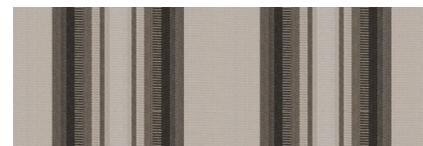
**940/5 Green Elite Stripe**



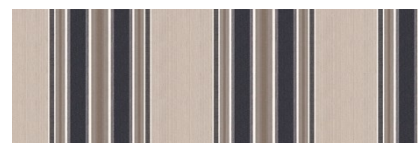
**947/14 Pale / Beige Classic**



**949/91 Brown Beige  
Classic**



**950/24 Grey / Charcoal  
Classic**



**951/92 Grey / Navy  
Classic**



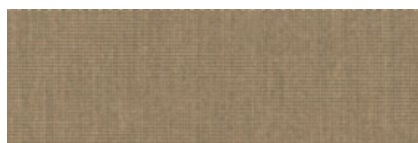
**967/926 Grey/Charcoal Elite**



**968/426 Terracotta Cream  
Fancy**



**97/84 Plum**



**986/106 Textured Beige**



**986/15 Textured Lt. Grey**



**986/727 Textured Pebble  
Grey**

# SOLIDS · TWEEDS · BLOCK STRIPES · FANCY STRIPES · GRADUATED STRIPES

5	Forest Green	407/14	Toast Classic Tweed	5406/52	Coriander Tweed
7	Moss Green	407/16	Moss Classic Tweed	5406/94	Textured Desert Beige
8	Medium Green	407/3	Green Classic Tweed	5407/107	Charcoal/Stone Tweed
11	Red	407/6	Green Tweed	5407/15	Textured Silk Grey
12	Yellow	407/79	Pepper Grey	5407/17	Sky Tweed
13	Ocean Blue	407/926	Grey Classic Tweed	5407/52	Sesame Tweed
14	Toast	4215/15	Textured Tan	5407/94	Desert Grey Tweed
15	White	5000/57	Cocoa Stripe	633/79	Grey/Black Fancy
24	Black	5001/1	Green Graduated	634/51	Grey/Natural Fancy
33	Forest Green/White	5001/13	Blue Graduated	634/97	Green/Tan Fancy
35	Red/White	5001/7	Moss Graduated	635/11	Cranberry/Natural Fancy
37	Yellow/White	5001/73	Burgundy/Grey Graduated	636/10	Grey/Blue Graduated
47	Brown/Stone	5009/1	Beige/Tan Stripe	636/12	Yellow Graduated
52	Tan	5009/14	Brown/Tan Stripe	636/14	Brown Elite Stripe
53	Pale Peach	5011/11	Brick/Natural Fancy	636/5	Green/Beige Fancy
73	Burgundy	5011/57	Tan/Brown Fancy	636/84	Terracotta Graduated
75	Navy Blue	5011/7	Tan/Green Fancy	638/5	Green/Grey Fancy
79	Grey	5071/7	Natural/Moss Graduated	639/99	Tan/Natural Fancy
81	True Brown	5072/86	Brown/Stone Fancy	641/10	Blue/Beige Fancy
84	Dark Terracotta	5118/62	Yellow/White Fancy	727/15	Textured Medium Grey
87	Fancy Blue	5144/14	Pastel/Natural Fancy	739/701	Sage/Beige Fancy
101	Elite Toast	5167/11	Red/Grey Fancy	769/75	Cream/Blue Fancy
102	Cappuccino	5167/2	Blue/Grey Fancy	782/14	Beige Solid Classic
106	Toffee	5167/5	Green/Grey Fancy	873/151	Dune Tweed
107	Textured Dark Grey	5173/12	Yellow/Grey Stripe	873/2	Textured Cocoa
242	Grey/White	5304/15	Rose/Grey Stripe	939/94	Grey Elite Stripe
426	Terracotta	5347/58	Grey/Wheat Multi	940/5	Green Elite Stripe
439	Dark Grey/White	5347/79	Platinum Grey Multi	947/14	Pale Beige Classic
809	Cream/Green	5348/58	Beige/Wheat Multi	949/91	Brown/Beige Classic
878	Beige/White Speckled	5348/79	Grey/Slate Multi	950/24	Grey/Charcoal Classic
926	Taupe Classic Solid	5349/106	Brown/Cream Stripe	951/92	Grey/Navy Classic
931	Green/Cream Wide	5349/930	Beige/Brown Classic	967/926	Grey/Charcoal Elite
969	Grey Fancy Stripe	5369	Charcoal/Brown	968/426	Terracotta/Cream Fancy
1101	Beige/Stripe Fancy	5370	Beige/Grey	97/84	Plum
1120	Brown/Beige Fancy	5371/727	Grey/Black Stripe	986/106	Textured Beige
1150	Rust/Green Multi	5374	Smoke/Grey Stripe	986/15	Textured Light Grey
116/15	Medium Blue/White	5396/78	Green Tweed Stripe	986/727	Textured Pebble Grey
1243	Yellow Multi	5396/930	Hazelnut Stripe		
1302	Sage Tweed	5396/97	Charcoal Tweed Stripe		
1330/512	Carbon Stitch	5397/97	Grey/Black Graduated		
15/1	Beige	5398/107	Carbon Blue Blend		
15/14	Raw	5398/930	Dune/Brown Stripe		
15/79	Stone	5399/107	Dark Grey Tweed		
4015/91	Raw Speckled	5399/15	Light Grey Stripe		
407/11	Burgundy Tweed	5399/52	Sesame Tweed Stripe		
407/13	Blue Tweed	5399/94	Stone/Grey Tweed		







RecScreen  
5000P

Exterior Screen Fabric



300 Charcoal / Charcoal

## Specifications

---

**Composition:** 15% Polyester, 85% Vinyl

**Syle:** Basket Weave

**Mesh Weight:** 14,75 (oz/yd<sup>2</sup>)

**Openness Factor:** 5.5 %

**Fabric Thickness (in):** .026

**Width:** 118"

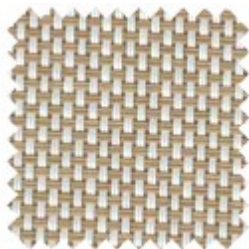
**Fire classification:** NFPA 701 Test 1, and CA Fire Marshall Title 19, Section 1237.1

**Warranty:** 5 years exterior

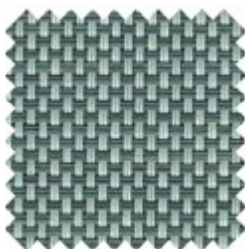
**Bacteria and Fungal Resistance:** AATCC Test Method 100-2004



001 White  
/ Linen



002 Blanco  
/ Sable



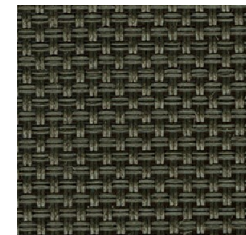
405 Pearl  
/ Dark Grey



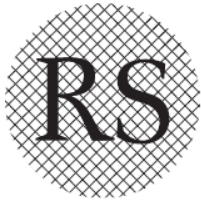
305 Charcoal  
/ Dark Grey



307 Charcoal  
/ Bronze



770 Bronze  
/ Bronze



# RecScreen

6000P



300 Charcoal / Charcoal

## Specifications

---

**Composition:** 18% Polyester, 82% Vinyl

**Style:** Twill

**Mesh Weight:** 17,8 (oz/yd<sup>2</sup>)

**Openness Factor:** 3 %

**Fabric Thickness (in):** .78 mm

**Width:** 118"

**Fire classification:** NFPA 701 Test 1, and CA Fire Marshall Title 19, Section 1237.1

**Warranty:** 10 Year Limited. Visit [www.recasensusa.com](http://www.recasensusa.com) for full warranty.

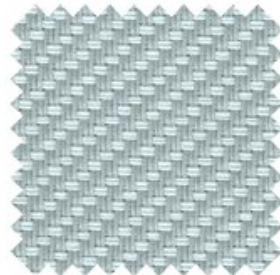
**Bacteria and Fungal Resistance:** AATCC Test Method 100-2004



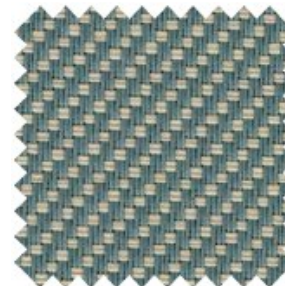
001 White  
/ Linen



002 White  
/ Sable



004 White  
/ Pearl Grey



502 Dark  
Gray / Sable



503 Dark  
Gray / Charcoal



307 Charcoal  
/ Bronze



# Exterior Screen Fabric

**NEW!**  
**Natté™**

Outdoor Screen Fabric.

42% Fiberglass

58% vinyl

3%, 5% , & 10%



3% 30M687 | Charcoal/Cocoa-Fawn



5% 30M687 | Charcoal/Cocoa-Fawn



10% 30M687 | Charcoal/Cocoa-Fawn



910902  
Sable/White

10M127  
Sable/Sable-Fog

910988  
Sable/Wood

901910  
Grey/Sable

30M687  
Charcoal/  
Cocoa-Fawn

930961  
Charcoal/Cocoa

930992  
Charcoal/Gamet

901901  
Grey/Grey

901930  
Grey/Charcoal

30M394  
Charcoal/  
Charcoal-Navy

930993  
Charcoal/Forest

930930  
Charcoal/  
Charcoal



Sun Control Textiles™



# Exterior Screen Fabric

**NEW!**  
**Satiné™**

Outdoor Screen Fabric.

42% Fiberglass

58% vinyl

1% & 5%



1% 30M394 | Charcoal/Charcoal-Navy



5% 30M394 | Charcoal/Charcoal-Navy



910988  
Sable/Wood

10M986  
Sable/  
Garnet-Auburn

910993  
Sable/Forest

30M687  
Charcoal/  
Cocoa-Fawn

930961  
Charcoal/Cocoa

30M386  
Charcoal/  
Charcoal-Auburn

901994  
Grey/Navy

30M394  
Charcoal/  
Charcoal-Navy

01M230  
Grey/Fog-Charcoal

30M301  
Charcoal/  
Charcoal-Grey

930930  
Charcoal/Charcoal

930992  
Charcoal/Garnet



Sun Control Textiles™

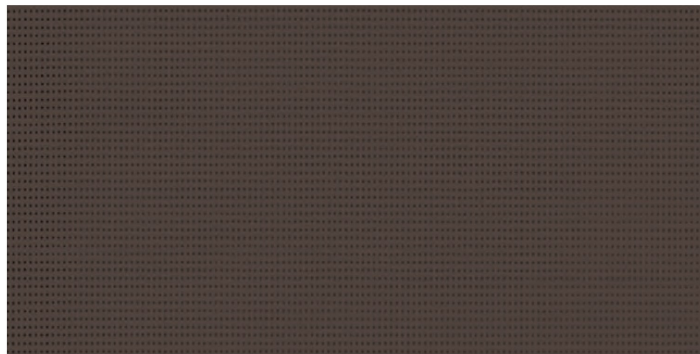
**Soltis**  
Horizon 86

**Serge Ferrari**

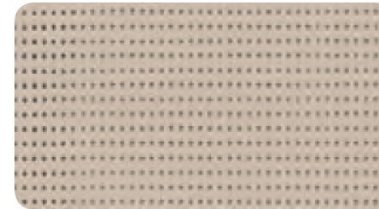
14 % Open Screen Mesh

Exterior Screen Fabric

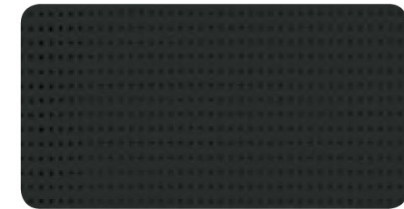
5 year warranty from Ferrari



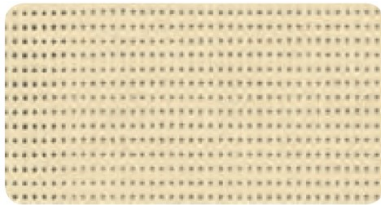
86-2043  
Bronze



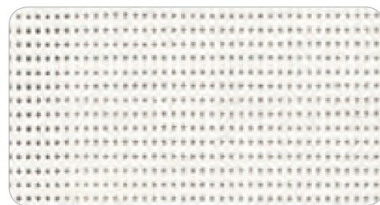
86 – 2135  
Sandy Beige



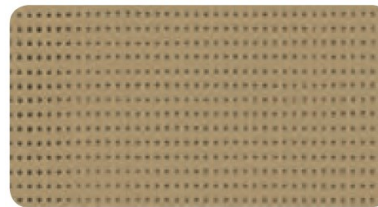
86 – 2053  
Black



86 – 2175  
Champagne



86 – 2044  
White



86 – 2012  
Pepper



86 – 2171  
Boulder

■ **Technical properties**

Openess factor	14%
Weight	380 g/m <sup>2</sup> — 11.2 oz/sqyd
Thickness	0.45 mm — 450 microns
Width	177 cm - 267 cm — 69.7 in. - 105.1 in.

Superior elongation and tear resistance

No deformation during processing and use

Superior aesthetic and mechanical durability

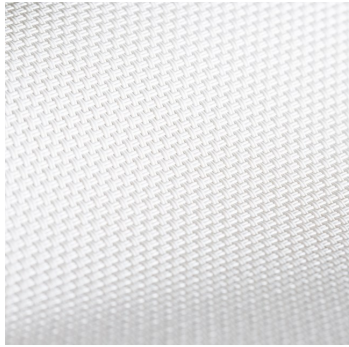
Smooth finish easy to clean, space saving, easy rolling



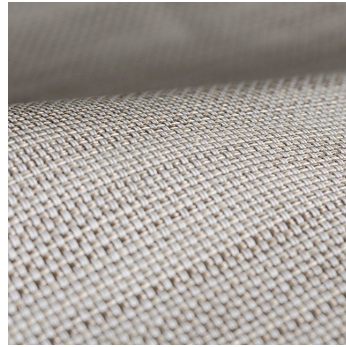
## Exterior Screen Fabric



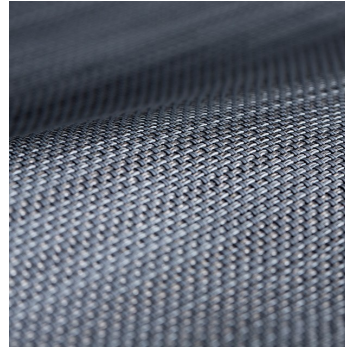
5 % Open Screen Mesh



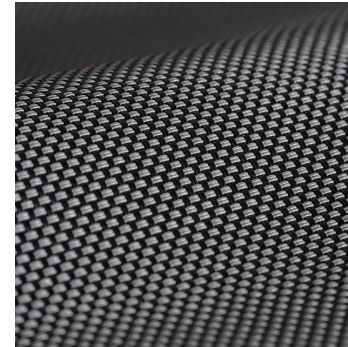
White



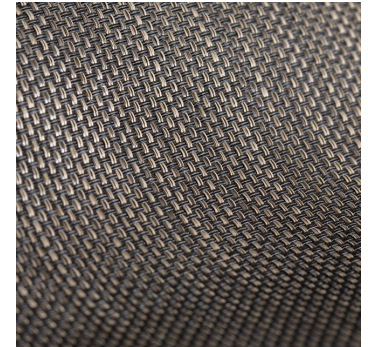
Stone Texture



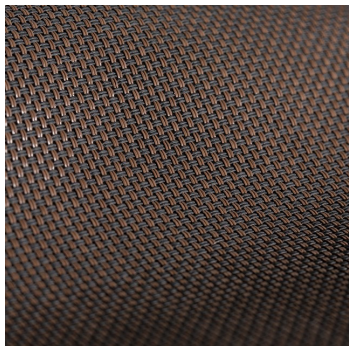
ShadowTexture



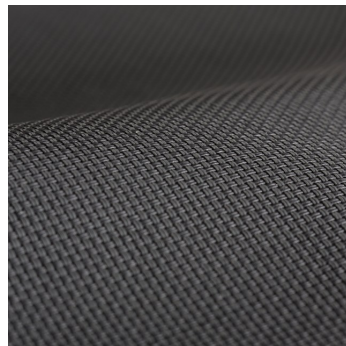
Granite



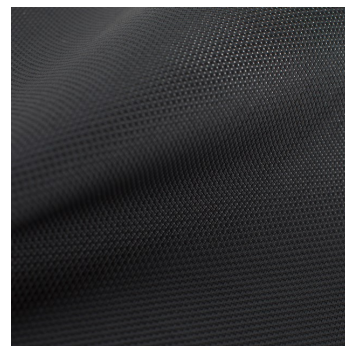
Espresso Texture



Tobacco



Charcoal



Flat Black



Bone

TEXTILENE® nano™ 95 is a durable, yet lightweight synthetic fabric. It is lighter and finer with the same technical qualities as the original TEXTILENE®. TEXTILENE® nano™95 is excellent for exterior use and can reduce energy costs while blocking up to 95% of the sun's harmful rays.





Exterior Vinyl Fabric Zipper Screens only

## 502 PROOF SOLTIS / OPAQUE SATINE FINISH COLORS

The Preconstraint 502 fabric from Ferrari also offers excellent dimensional stability with minimal stretching and exceptional dirt resistance thanks to a PVDF topcoat on both sides. The fabric is therefore perfect for use on retractable zipper screens with window film. The fabric is 16.8 oz / sq. yd. with a satin finish. Fabrics are fire retardant / certificate is available upon request.



satin finish

5 year warranty from Ferrari

  
**Serge Ferrari**

# MOTORIZATION

POWERED by  
**somfy**



Awnings



Exterior Screens



Pergolas



Roller/Solar Shades



Sunair is proud to offer the full line of Somfy motors and controls for our awnings and screens program. SOMFY RTS features motors with an integrated radio receiver that allows you to operate the awning by remote control with a wall mounted or hand held remote or by smart phone device. With a simple click of your remote, the awning or shade will extend or retract automatically. The manual override Sunea motor is ideal for awnings and the Altus motors is ideal for exterior screens. Each motor can be configured with a cord & plug which can simply be plugged into your patio outlet. They are available in 1.4", 11', 17', & 23' lengths. Altus motor cords depend on motor model and is standard either 6' or 10' pigtail cords. Optional Altus plug in cords are available in 10', 18', and 24' lengths. Optional screen motor is Maestria with obstacle detection. Add Tahoma smart phone and table interface.



ALTUS®

# SOMFY REMOTES:



Telis 1 & 4 RTS  
Hand-held Remotes



Situ 1 & 4 hand  
held remotes

One (1) through (16) channel hand held or wall mounted remotes are available. Remotes are available in different colors to suit your style, please inquire.



Telis hand-held remotes offer convenient and simple operation of every type of motorized application. Channels help organize the motorized products that are operated. Single channel remotes can operate one individual product or one group of motorized products. Multiple channel remotes can handle groups of motorized products.



Telis 1 Chronis  
RTS Timer



DecoFlex WireFree™ RTS  
Wall Switches



Telis 1 Patio for  
exterior use



Smooove® 1 RTS  
Surface Mount Wall Switch



Telis 16 RTS  
Hand-held Remote



# AVAILABLE AUTOMATIC SENSORS & CONTROLS



**SOLIRIS RTS 24V KIT**  
**Sun & Wind Sensor**

The Soliris RTS Sun and Wind Sensor automatically controls your RTS motorized products based on current weather conditions.



**ONDEIS® WIREFREE**  
**Sun & Rain Sensor**

The Rain Sensor is a solar-powered combined rain and sun sensor compatible with Radio Technology Somfy® motorized exterior products, including awnings and screens.



**Sunis & ThermoSunis**  
**Indoor WireFree™ RTS Sensors**



# SOMFY MOTOR WIRING



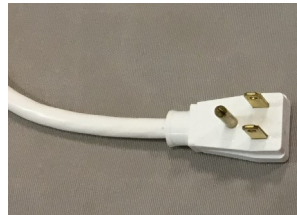
**Radio Technology Somfy**

Radio Technology Somfy® (RTS) allows wireless radio control of motorized applications via the RTS family of controls.



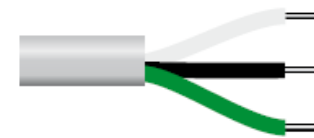
The three (3) wire cords can be wired in parallel and can be ordered with a molded plug to simply plug into an exterior UL approved GFI outlet. The standard four (4) wire cords must be hard wired with a traditional toggle wall switch. Screens can not be ordered with molded plugs on the end.

**Optional molded plug is available for "awning" motors only**



## Type of power cable **RTS plug in capable motor cord**

**RTS**  
120V AC / 60Hz  
3 conductor cable



white = neutral  
black = hot  
green = ground

## All Somfy Motors are UL and CSA Recognized

- All SOMFY motors are UL Recognized and can be found under the following file numbers:  
E60495, E60888, E63714



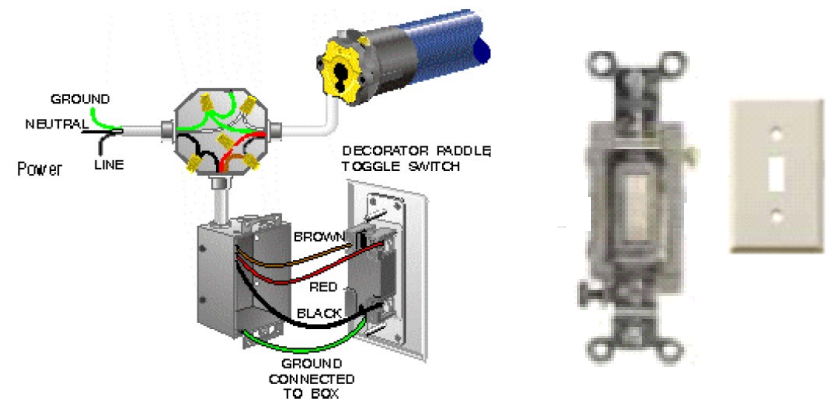
## Type of power cable **STANDARD Hardwire motor cord**

**Wired**  
120V AC / 60Hz  
4 conductor cable



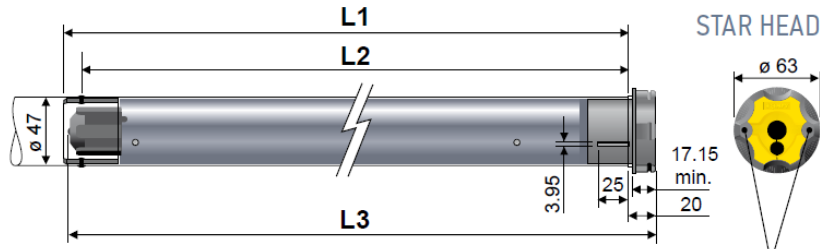
white = neutral  
red = direction 1  
black = direction 2  
green = ground

**Hardwired motors with a wall switch**





## Dimensions



2 mounting holes for self tapping screws. Dia. 5 mm (cat #9670013).  
Depth 13 mm spaced 1.89" (48 mm) apart.

# LT50 Altus<sup>®</sup> RTS

506	510	525	535	550
6 Nm	10 Nm	25 Nm	35 Nm	50 Nm
120V / 60HZ	120V / 60HZ	120V / 60HZ	120V / 60HZ	120V / 60HZ
1.1A	1.3A	1.6A	2.1A	2.1A
38 rpm	38 rpm	20 rpm	20 rpm	14 rpm



# Somfy TaHoma® RTS Smartphone and Tablet Interface

The Somfy TaHoma® gateway and smart phone app provides convenient and customized control of Somfy powered motorized shades, blinds, and other motorized solutions. Control up to 40 RTS (Radio Technology Somfy) channels using the TaHoma app. Multiple TaHoma devices can be joined for multi-zone control.



- North America app, you can remotely activate both Zigbee and RTS products Supports UP/DOWN/MY/STOP commands for motorized shades/blinds .
- Supports incremental control for Tilt motors and lighting ☑ Supports ON/OFF commands for control of lighting or other devices powered via the Zigbee Smart Plug Multiple users .
- Remote access Control4® Certified ☑ Integration with third-party systems over IP ☑ Compatible with Somfy Synergy™ API



TaHoma® RTS



# Bond Home / Smartphone and Tablet Interface

Bond Bridge and Bond Bridge Pro works as a bridge between Wi-Fi and your remotes recorded signal allowing you to operate your Sunair shades, awnings, pergolas, ceiling fans, fireplaces and more with the Bond app. Works with Somfy and other motor manufacturers.



## Bond Bridge

- Works with Alexa, Google Home, and SmartThings,
- Remote Control via Bond Home app
- Works with iPhone or Android
- No installation needed
- Smart home functionality without breaking the bank

## Bond Bridge Pro: *Added features...*

- Ethernet port & PoE technology
- Smart home integrations
- Ceiling and wall mount

## Remote control from anywhere

Be able to control everything  
even from outside your home.



## OPTIONAL:

- Sidekick for Shades: 5-channel Shade and awning

# BOND REMOTE SWITCH:

## Sidekick for Shades/Awnings: 5-channel Shade Keypad



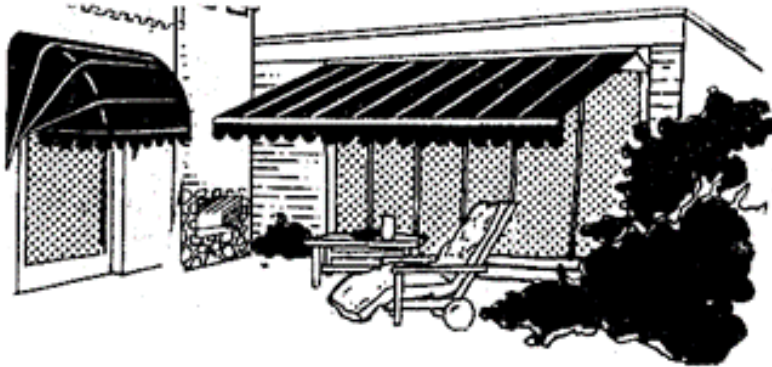
- Wireless flush mount shade remote.
- Communicates directly with the shade.
- 10-year battery life.
- Set up shade limits – no manufacturer remote required.
- This version of Sidekick does not support Scene Keypad functionality.
- 10-year battery life.
- Install with or without a workbox (flush mount).
- 5-channel control.
- Set up shade limits – no manufacturer remote required.





# Notes

**Note: Sunair® reserves the right to change engineering, specifications and prices without notice.  
Images and Illustrations in the catalog may vary from digital and printed manuals.**



***SUNPROOFING AMERICA!***



**MARYLAND LOCATION**

Mailing: P.O. Box 1068  
Shipping: 7785 Rt. 175  
Jessup, MD 20794

Toll Free 800 - 548 - 0408  
Phone: 410 - 799 - 1145  
Fax: 410 - 799 - 5584

**ARIZONA LOCATION**

Mailing: Same as Jessup  
Shipping: 3807 West Thomas Rd.  
Phoenix, AZ 85017

Toll Free 877 - 272 - 3920  
Phone: 602 - 272 - 3920  
Fax: 602 - 272 - 3925

[www.sunairawnings.com](http://www.sunairawnings.com)

[info@sunairawnings.com](mailto:info@sunairawnings.com)