



SC3000 MASTERSHADE®

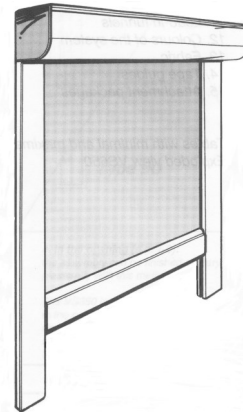
Exterior Rolling Screen / Large Cassette

The SC3000 is our large box traditional exterior retractable vertical rolling screen system. The fabric runs inside vertical guide Tracks or Cable Guides by means of gravity. When the shade is retracted the fabric is stored in the built-in protective box. The weighted hem bar keeps the fabric taut. This Mastershade model is made of the highest quality extruded aluminum.

The SC3000 has a 5 3/8" x 5 1/8" Cassette box.

| Type | Standard Frame Colors | Standard Widths | Standard Heights | Recommended Applications | Recommended Fabrics |
|-----------------------------|--------------------------|---------------------------------------|--------------------------------------------|----------------------------------------|-----------------------------------|
| Screen Exterior Retractable | 9 standard Sunair colors | Through 17' wide 24' w. with split | Through 16' Depending on Fabric type | Residential & Commercial Windows | Various Mesh & Acrylic Fabrics |

- Larger 5" standard box screen.
- Capable of wider widths with fabric split.
- Gear or Motorized operation.
- Cabled or standard track available.

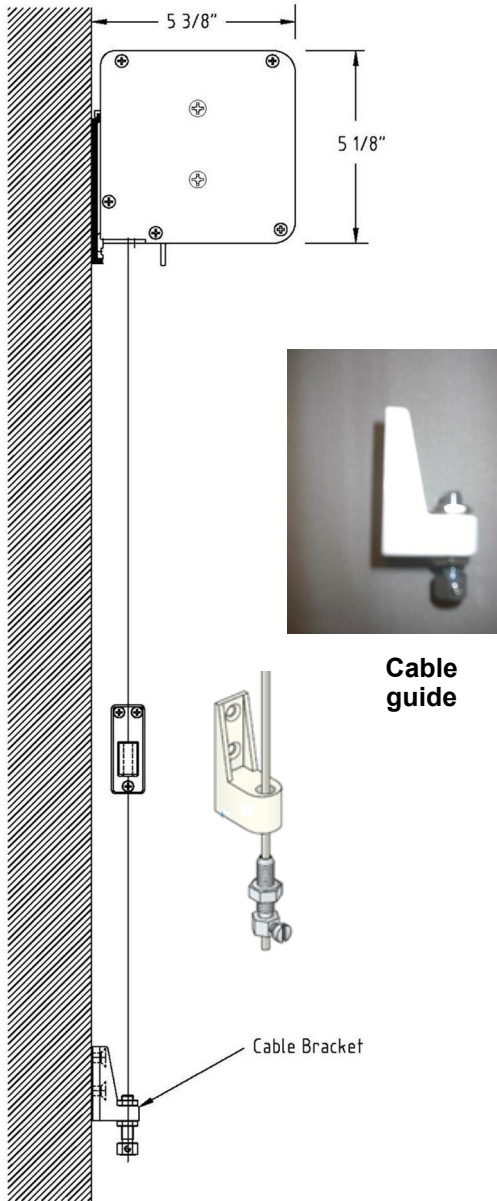


Revised 02/15/2023

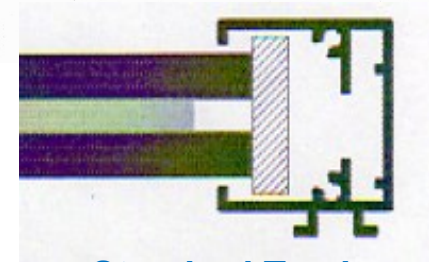
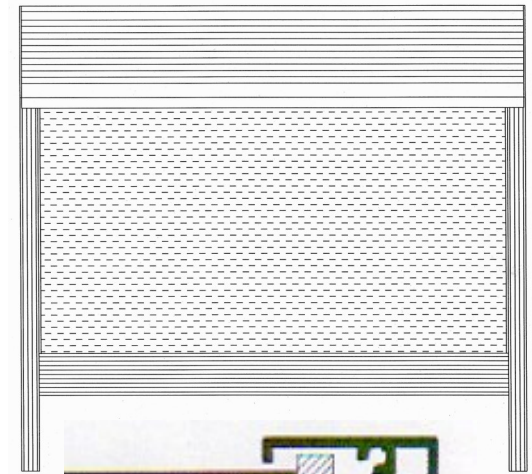
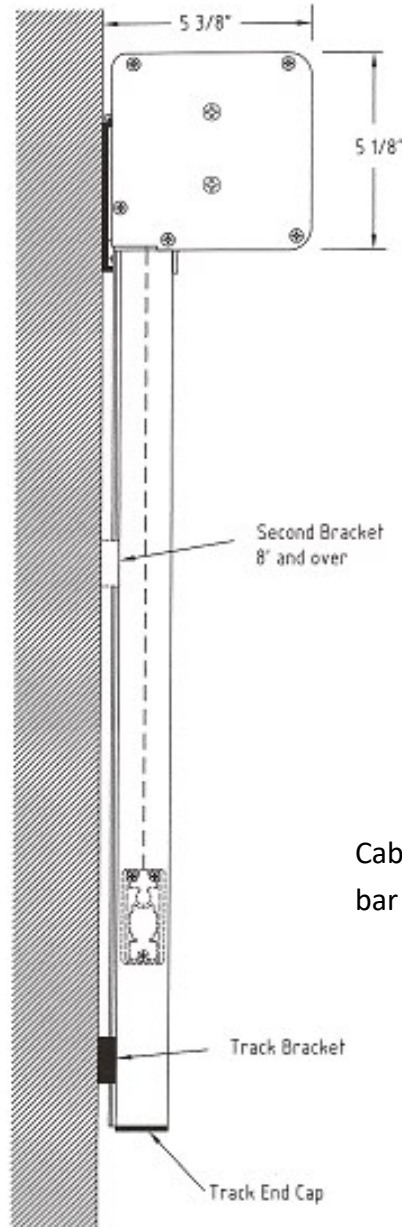
SC3000 Mastershade® Installations



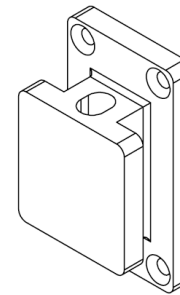
SC3000 Large Box With Cable Guides



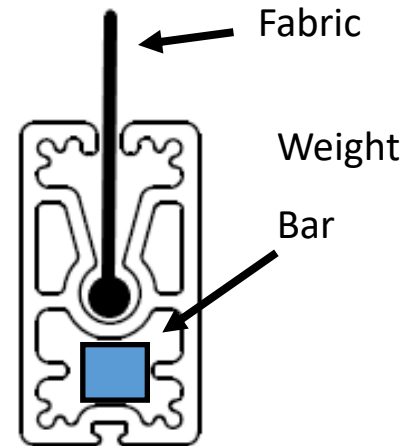
SC3000 Large Box With Standard Track



Standard Track

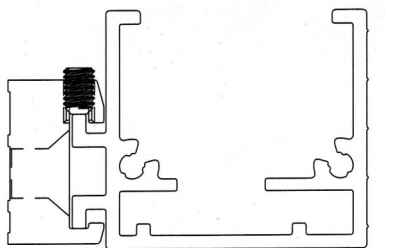
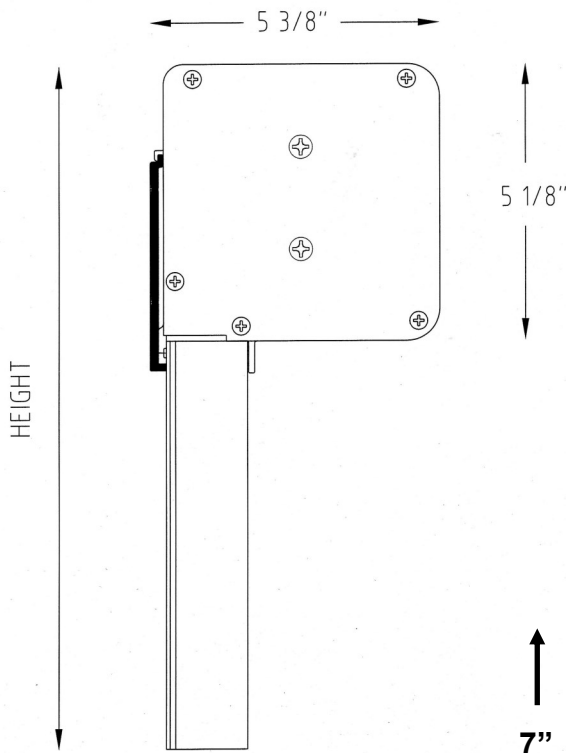


Cable and Track hem bar end bracket



**Hem bar with recessed fabric cavity
hiding the seam**

MEASURING SC3000:

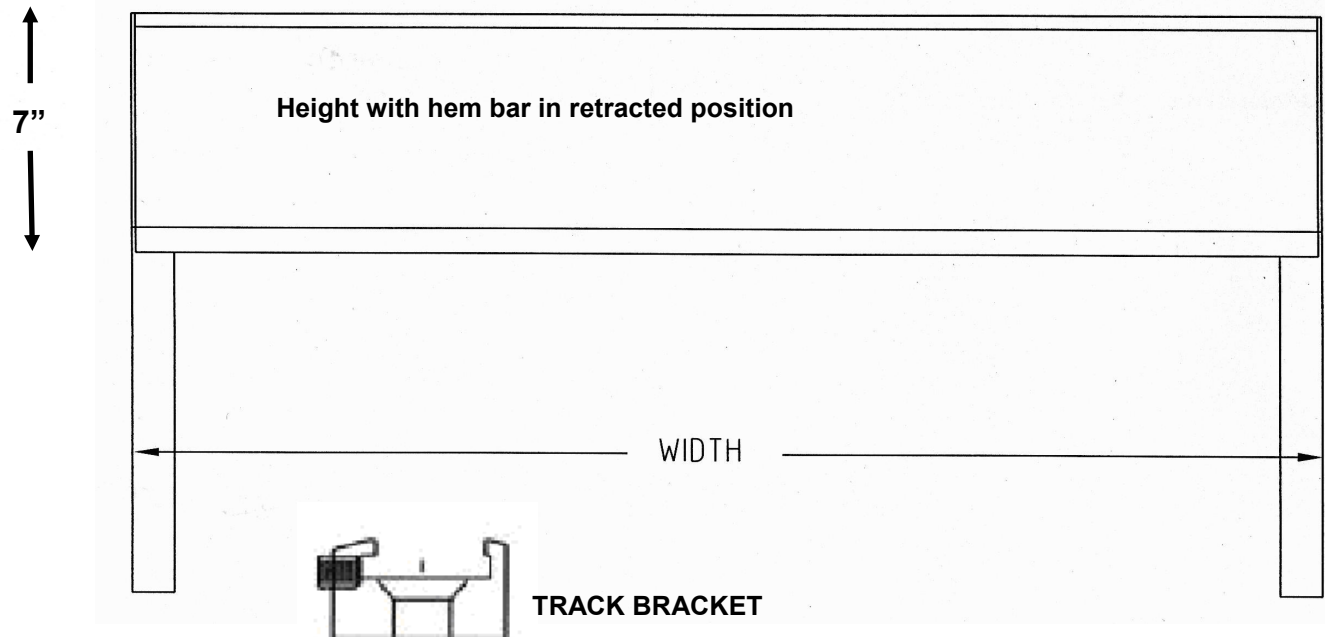


STANDARD TRACK
SC3000 shown with track
bracket

Width: Determine the desired width. The width you order is the measurement outside of track to outside of track. If possible, add 1 1/2" on each side for proper window coverage by the fabric. There will be a small 1/8" gap between the fabric edge and the track on each side. If using cable guides instead of track, allow roughly 1 1/2" less fabric on each side. Adjust the width of the cassette accordingly to cover the opening if using cable guides.

Height: Determine the height of the window or opening. The fabric or screen mesh should cover the height of the window. The height of the delivered screen includes the cassette. To calculate the height of the shade, add the height of the cassette (5") and the hem bar (2") to the total height of the window measurement (see to left and below). Note: Watch out for casement windows that will interfere with the hem bar when the shade is retracted (In such a case, mount the top of the cassette 6" above the opening window edge). In addition, if the hem bar needs to go below the glass area as not to be seen through the glass when the shade is lowered, add another 2" to the height, for a total of 9" (Glass height plus 9").

Note: The cassette can be ceiling mounted (see install instructions)



BENEFITS OF SOLAR SCREENS



Screen fully lowered down

- **Reduces indoor temperatures and saves energy cooling your space.**
- **Cuts down on solar glare while retaining your view depending on mesh fabric type and openness factor.**
- **Cuts down on interior fading of floors, carpets and furniture.**
- **Can offer complete black out privacy blocking all light.**



Screen partially lowered down

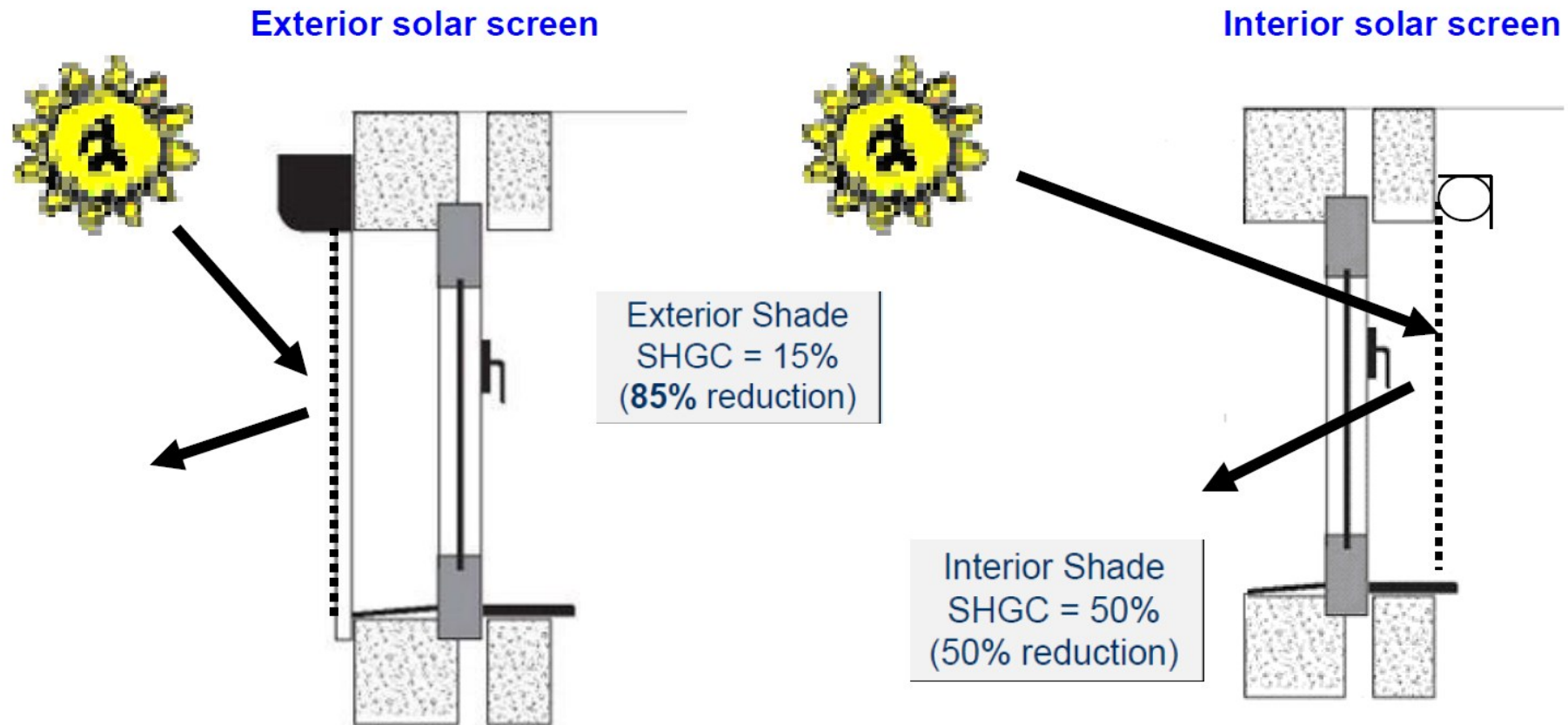


Screen partially down showing glare



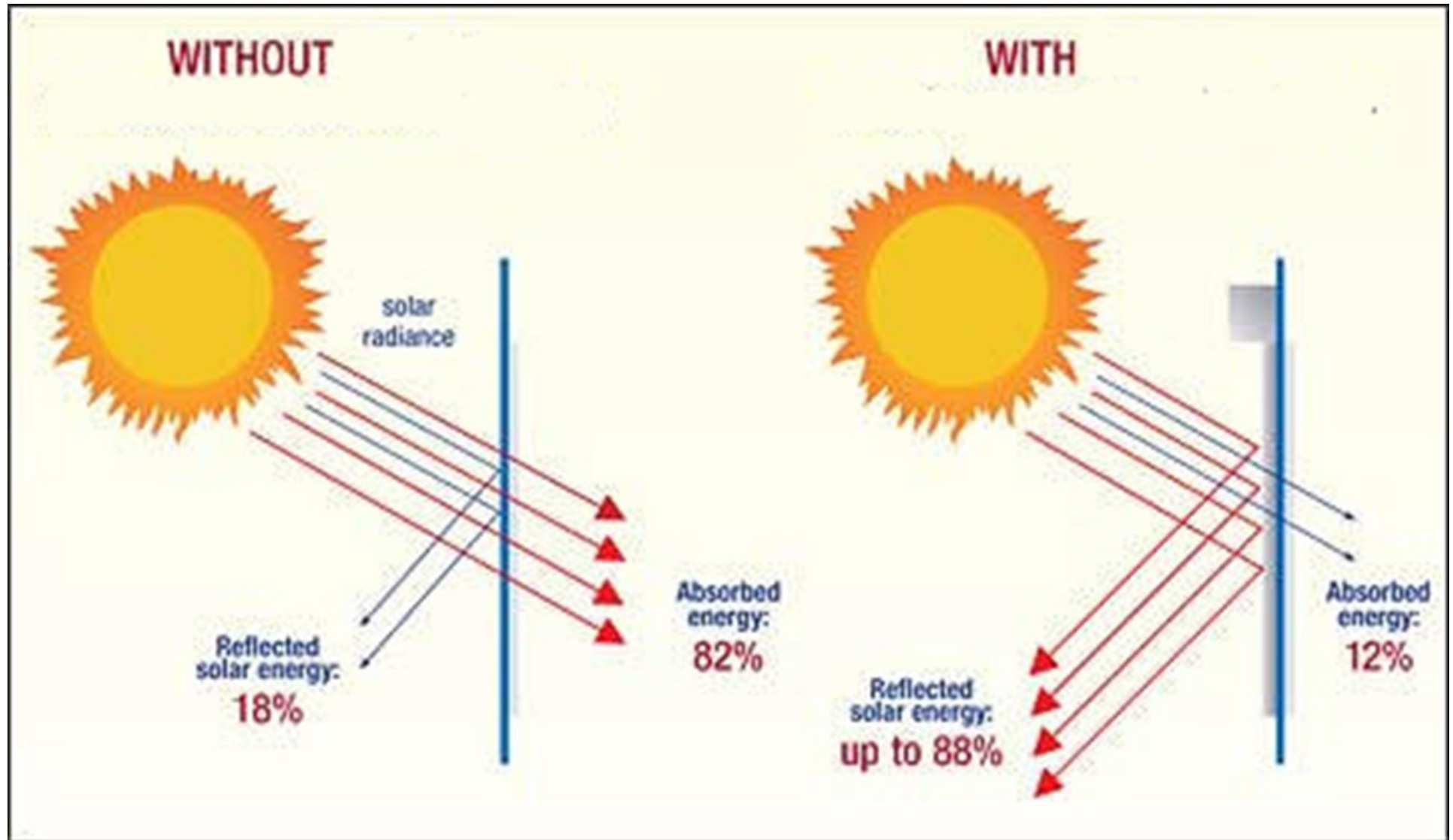
Screen fully down and no glare

BENEFITS OF SOLAR SCREENS cont:



Solar screens can be installed both on the exterior and interior applications of residential and commercial spaces. The benefit with exterior solar screens is that the fabric blocks the sun before it enters the home or space through the glass. Sometimes it is not feasible to install an exterior screen. In such a case, interior screens offer a good alternative. Interior screens are also more economical.

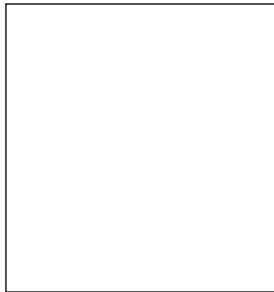
BENEFITS OF EXTERIOR SOLAR SCREENS:



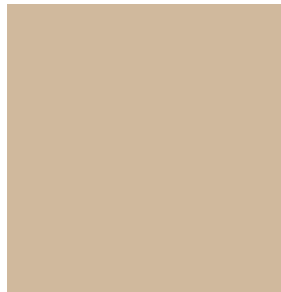
FRAME COLORS (STANDARD)

Screens*

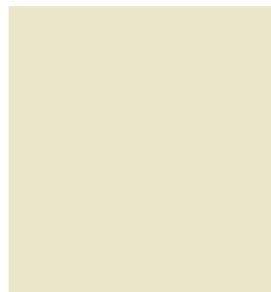
*Note: See each model technical page for available frame colors. Available interior screen colors are different than depicted below (see Interior screens).



WHITE Gloss
Ral 9010



MOCHA
Semi Gloss



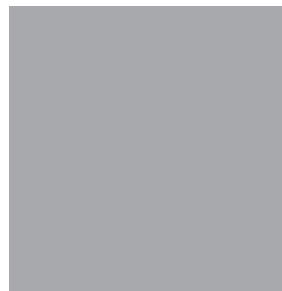
**DESERT SAND /
IVORY Gloss**



BLACK Gloss
Ral 9005



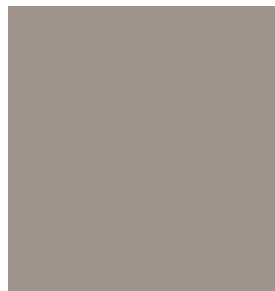
BRONZE
Coarse



GREY Gloss
Ral 7040



BROWN Gloss

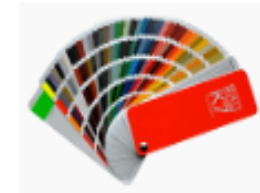


TAUPE Gloss



GREEN Gloss
Ral 6005

OPTIONAL



**FULL RAL COLOR
RANGE / EXTRA COST**

NOTE: All these colors except Green Ral 6005 and Desert Sand / Ivory are “super durables” which offer better durability compared with standard polyesters powders.

NOTE: ACTUAL FRAME COLOR MAY VARY FROM DIGITAL IMAGES





TEMPOTEST
ITALIAN PERFORMANCE FABRICS



ACRYLIC FABRIC COLLECTION



Fabric covers sewn with Tenara thread.



5 Forest Green



7 Moss Green



8 Medium Green



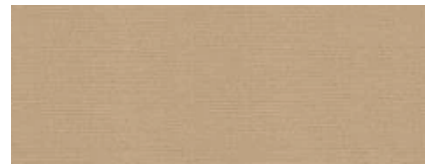
11 Red



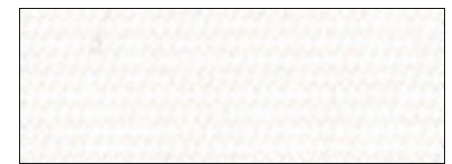
12 Yellow



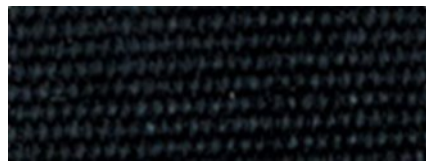
13 Ocean Blue



14 Toast



15 White



24 Black



33 Forest Green / White



35 Red / White



37 Yellow / White



47 Brown / Stone



52 Tan



53 Pale Peach



73 Burgundy



75 Navy Blue



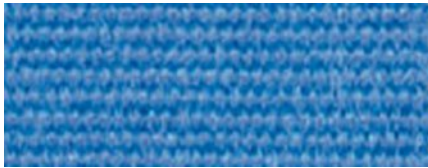
79 Grey



81 True Brown



84 Dark Terracotta



87 Fancy Blue



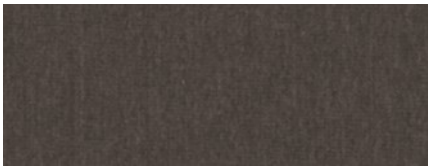
101 Elite Toast



102 Cappuccino



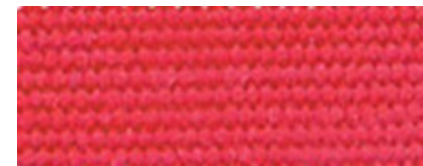
106 Toffee



107 Textured Dk. Grey



242 Grey / White



426 Terracotta



439 Dark Grey / White



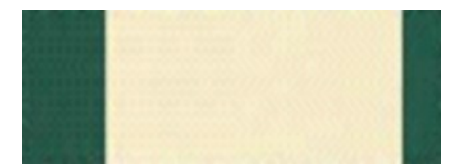
809 Cream / Green



878 Beige / White Speckled



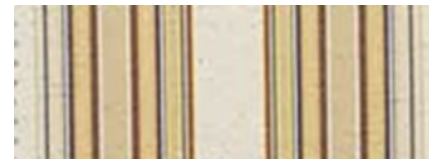
926 Taupe Classic Solid



931 Green / Cream Wide



969 Grey Fancy Stripe



1101 Beige / Stripe Fancy



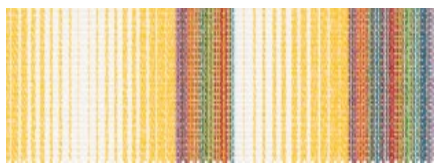
1120 Brown/ Beige Fancy



1150 Rust / Green Multi



116/15 Medium Blue / White



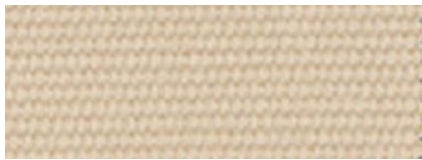
1243 Yellow Multi



1302 Sage Tweed



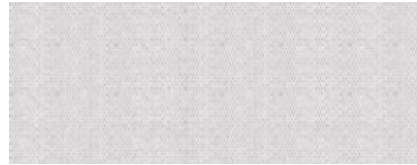
1330/512 Carbon Stitch



15/1 Beige



15/14 Raw



15/79 Stone



4015/91 Raw Speckled



407/11 Burgundy Tweed



407/13 Blue Tweed



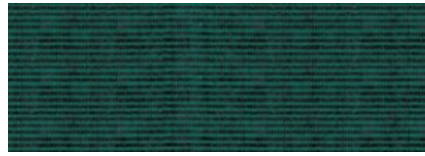
407/14 Toast Classic Tweed



407/16 Moss Classic Tweed



407/3 Green Classic Tweed



407/6 Green Tweed



407/79 Pepper Grey



407/926 Grey Classic Tweed



4215/15 Textured Tan



5000/57 Cocoa Stripe



5001/1 Green Graduated



5001/13 Blue Graduated



5001/7 Moss Graduated



5001/73 Burg/Grey Graduated



5009/1 Beige / Tan Stripe



5009/14 Brown / Tan Stripe



5011/11 Brick/Natural Fancy



5011/57 Tan / Brown Fancy



5011/7 Tan / Green Fancy



5071/7 Natural/Moss Graduated



5072/86 Brown/Stone Fancy



5118/62 Yellow / White Fancy



5144/14 Pastel/Natural Fancy



5167/11 Red / Grey Fancy



5167/2 Blue / Grey Fancy



5167/5 Green / Grey Fancy



5173/12 Yellow / Grey Stripe



5304/15 Rose / Grey Fancy



5347/58 Grey Wheat Multi



5347/79 Platinum Grey Multi



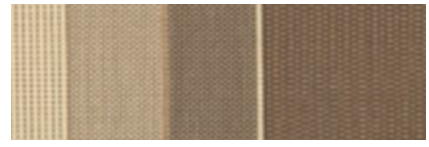
5348/58 Beige / Wheat Multi



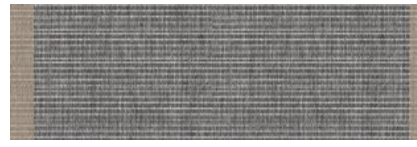
5348/79 Grey / Slate Multi



5349/106 Brown Cream Stripe



5349/930 Beige / Brown Classic



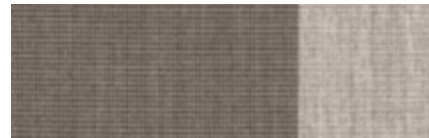
5369 Charcoal / Brown



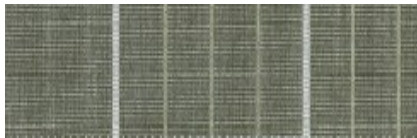
5370 Beige / Grey



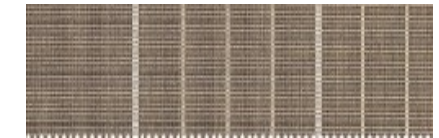
5371/727 Grey / Black Stripe



5374 Smoke / Grey Stripe



5396/78 Green Tweed Stripe



5396/930 Hazelnut Stripe



5396/97 Charcoal Tweed Stripe



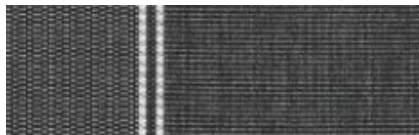
5397/97 Grey / Black Graduated



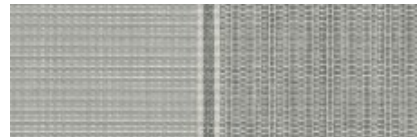
5398/107 Carbon Blue Blend



5398/930 Dune / Brown Striped



5399/107 Drk. Grey Tweed



5399/15 Lgt. Grey Stripe



5399/52 Sesame Tweed
Stripe



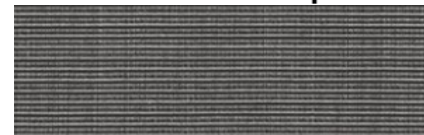
5399/94 Stone / Grey
Tweed



5406/52 Coriander Tweed



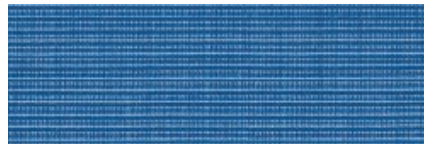
5406/94 Textured / Desert
Beige



5407/107 Charcoal /
Stone Tweed



5407/15 Textured Silk
Grey



5407/17 Sky Tweed



5407/52 Sesame Tweed



5407/94 Desert Grey
Tweed



633/79 Grey/ Black Fancy



634/51 Grey / Natural Fancy



634/97 Green / Tan Fancy



635/11 Cranberry/Natural F.



636/10 Grey / Blue Graduated



636/12 Yellow Graduated



636/14 Brown Elite Stripe



636/5 Green / Beige Fancy



636/84 Terracotta Graduated



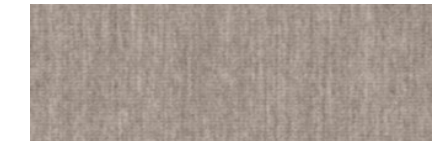
638/5 Green Grey Fancy



639/99 Tan / Natural Fancy



641/10 Blue / Beige Fancy



727/15 Textured Med. Grey



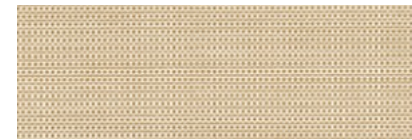
739/701 Sage / Beige Fancy



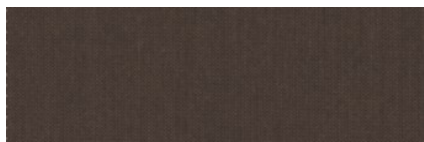
769/75 Cream / Blue Fancy



**782/14 Beige Classic
Solid**



873/151 Dune Tweed



873/2 Textured Cocoa



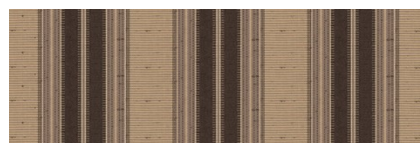
939/94 Grey Elite Stripe



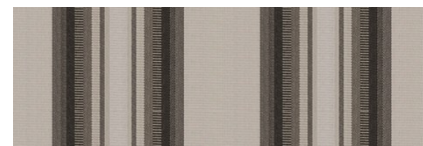
940/5 Green Elite Stripe



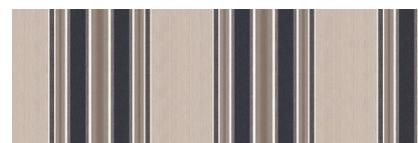
947/14 Pale / Beige Classic



**949/91 Brown Beige
Classic**



**950/24 Grey / Charcoal
Classic**



**951/92 Grey / Navy
Classic**



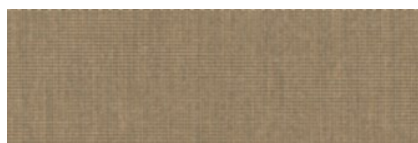
967/926 Grey/Charcoal Elite



**968/426 Terracotta Cream
Fancy**



97/84 Plum



986/106 Textured Beige



986/15 Textured Lt. Grey



**986/727 Textured Pebble
Grey**

SOLIDS · TWEEDS · BLOCK STRIPES · FANCY STRIPES · GRADUATED STRIPES

| | | | | | |
|----------|----------------------|----------|-------------------------|----------|-------------------------|
| 5 | Forest Green | 407/14 | Toast Classic Tweed | 5406/52 | Coriander Tweed |
| 7 | Moss Green | 407/16 | Moss Classic Tweed | 5406/94 | Textured Desert Beige |
| 8 | Medium Green | 407/3 | Green Classic Tweed | 5407/107 | Charcoal/Stone Tweed |
| 11 | Red | 407/6 | Green Tweed | 5407/15 | Textured Silk Grey |
| 12 | Yellow | 407/79 | Pepper Grey | 5407/17 | Sky Tweed |
| 13 | Ocean Blue | 407/926 | Grey Classic Tweed | 5407/52 | Sesame Tweed |
| 14 | Toast | 4215/15 | Textured Tan | 5407/94 | Desert Grey Tweed |
| 15 | White | 5000/57 | Cocoa Stripe | 633/79 | Grey/Black Fancy |
| 24 | Black | 5001/1 | Green Graduated | 634/51 | Grey/Natural Fancy |
| 33 | Forest Green/White | 5001/13 | Blue Graduated | 634/97 | Green/Tan Fancy |
| 35 | Red/White | 5001/7 | Moss Graduated | 635/11 | Cranberry/Natural Fancy |
| 37 | Yellow/White | 5001/73 | Burgundy/Grey Graduated | 636/10 | Grey/Blue Graduated |
| 47 | Brown/Stone | 5009/1 | Beige/Tan Stripe | 636/12 | Yellow Graduated |
| 52 | Tan | 5009/14 | Brown/Tan Stripe | 636/14 | Brown Elite Stripe |
| 53 | Pale Peach | 5011/11 | Brick/Natural Fancy | 636/5 | Green/Beige Fancy |
| 73 | Burgundy | 5011/57 | Tan/Brown Fancy | 636/84 | Terracotta Graduated |
| 75 | Navy Blue | 5011/7 | Tan/Green Fancy | 638/5 | Green/Grey Fancy |
| 79 | Grey | 5071/7 | Natural/Moss Graduated | 639/99 | Tan/Natural Fancy |
| 81 | True Brown | 5072/86 | Brown/Stone Fancy | 641/10 | Blue/Beige Fancy |
| 84 | Dark Terracotta | 5118/62 | Yellow/White Fancy | 727/15 | Textured Medium Grey |
| 87 | Fancy Blue | 5144/14 | Pastel/Natural Fancy | 739/701 | Sage/Beige Fancy |
| 101 | Elite Toast | 5167/11 | Red/Grey Fancy | 769/75 | Cream/Blue Fancy |
| 102 | Cappuccino | 5167/2 | Blue/Grey Fancy | 782/14 | Beige Solid Classic |
| 106 | Toffee | 5167/5 | Green/Grey Fancy | 873/151 | Dune Tweed |
| 107 | Textured Dark Grey | 5173/12 | Yellow/Grey Stripe | 873/2 | Textured Cocoa |
| 242 | Grey/White | 5304/15 | Rose/Grey Stripe | 939/94 | Grey Elite Stripe |
| 426 | Terracotta | 5347/58 | Grey/Wheat Multi | 940/5 | Green Elite Stripe |
| 439 | Dark Grey/White | 5347/79 | Platinum Grey Multi | 947/14 | Pale Beige Classic |
| 809 | Cream/Green | 5348/58 | Beige/Wheat Multi | 949/91 | Brown/Beige Classic |
| 878 | Beige/White Speckled | 5348/79 | Grey/Slate Multi | 950/24 | Grey/Charcoal Classic |
| 926 | Taupe Classic Solid | 5349/106 | Brown/Cream Stripe | 951/92 | Grey/Navy Classic |
| 931 | Green/Cream Wide | 5349/930 | Beige/Brown Classic | 967/926 | Grey/Charcoal Elite |
| 969 | Grey Fancy Stripe | 5369 | Charcoal/Brown | 968/426 | Terracotta/Cream Fancy |
| 1101 | Beige/Stripe Fancy | 5370 | Beige/Grey | 97/84 | Plum |
| 1120 | Brown/Beige Fancy | 5371/727 | Grey/Black Stripe | 986/106 | Textured Beige |
| 1150 | Rust/Green Multi | 5374 | Smoke/Grey Stripe | 986/15 | Textured Light Grey |
| 116/15 | Medium Blue/White | 5396/78 | Green Tweed Stripe | 986/727 | Textured Pebble Grey |
| 1243 | Yellow Multi | 5396/930 | Hazelnut Stripe | | |
| 1302 | Sage Tweed | 5396/97 | Charcoal Tweed Stripe | | |
| 1330/512 | Carbon Stitch | 5397/97 | Grey/Black Graduated | | |
| 15/1 | Beige | 5398/107 | Carbon Blue Blend | | |
| 15/14 | Raw | 5398/930 | Dune/Brown Stripe | | |
| 15/79 | Stone | 5399/107 | Dark Grey Tweed | | |
| 4015/91 | Raw Speckled | 5399/15 | Light Grey Stripe | | |
| 407/11 | Burgundy Tweed | 5399/52 | Sesame Tweed Stripe | | |
| 407/13 | Blue Tweed | 5399/94 | Stone/Grey Tweed | | |





RecScreen
5000P

Exterior Screen Fabric



300 Charcoal / Charcoal

Specifications

Composition: 15% Polyester, 85% Vinyl

Syle: Basket Weave

Mesh Weight: 14,75 (oz/yd²)

Openness Factor: 5.5 %

Fabric Thickness (in): .026

Width: 118"

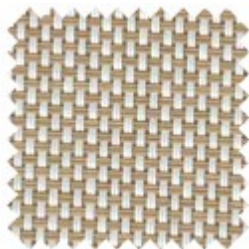
Fire classification: NFPA 701 Test 1, and CA Fire Marshall Title 19, Section 1237.1

Warranty: 5 years exterior

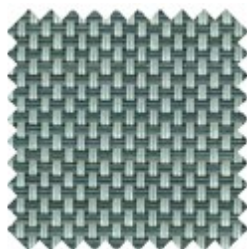
Bacteria and Fungal Resistance: AATCC Test Method 100-2004



001 White
/ Linen



002 Blanco
/ Sable



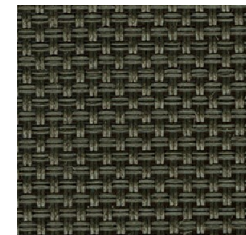
405 Pearl
/ Dark Grey



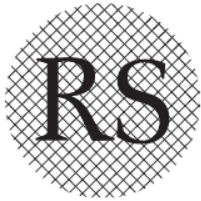
305 Charcoal
/ Dark Grey



307 Charcoal
/ Bronze



770 Bronze
/ Bronze



RecScreen

6000P



300 Charcoal / Charcoal

Specifications

Composition: 18% Polyester, 82% Vinyl

Style: Twill

Mesh Weight: 17,8 (oz/yd²)

Openness Factor: 3 %

Fabric Thickness (in): .78 mm

Width: 118"

Fire classification: NFPA 701 Test 1, and CA Fire Marshall Title 19, Section 1237.1

Warranty: 10 Year Limited. Visit www.recasensusa.com for full warranty.

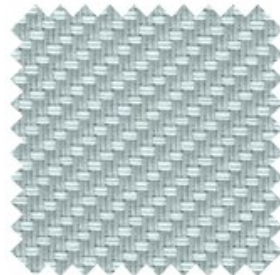
Bacteria and Fungal Resistance: AATCC Test Method 100-2004



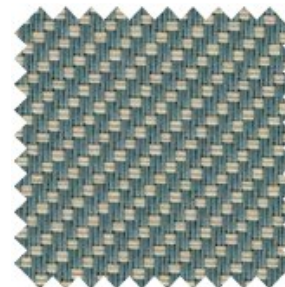
001 White
/ Linen



002 White
/ Sable



004 White
/ Pearl Grey



502 Dark
Gray / Sable



503 Dark
Gray / Charcoal



307 Charcoal
/ Bronze

Exterior Screen Fabric

NEW!
Natté™

Outdoor Screen Fabric.

42% Fiberglass

58% vinyl

3%, 5% , & 10%



3% 30M687 | Charcoal/Cocoa-Fawn



5% 30M687 | Charcoal/Cocoa-Fawn



10% 30M687 | Charcoal/Cocoa-Fawn



910902
Sable/White

10M127
Sable/Sable-Fog

910988
Sable/Wood

901910
Grey/Sable

30M687
Charcoal/
Cocoa-Fawn

930961
Charcoal/Cocoa

930992
Charcoal/Gamet

901901
Grey/Grey

901930
Grey/Charcoal

30M394
Charcoal/
Charcoal-Navy

930993
Charcoal/Forest

930930
Charcoal/
Charcoal



Sun Control Textiles™

Exterior Screen Fabric

NEW! **Satiné™**

Outdoor Screen Fabric.

42% Fiberglass

58% vinyl

1% & 5%



1% 30M394 | Charcoal/Charcoal-Navy



5% 30M394 | Charcoal/Charcoal-Navy



910988
Sable/Wood

10M986
Sable/
Garnet-Auburn

910993
Sable/Forest

30M687
Charcoal/
Cocoa-Fawn

930961
Charcoal/Cocoa

30M386
Charcoal/
Charcoal-Auburn

901994
Grey/Navy

30M394
Charcoal/
Charcoal-Navy

01M230
Grey/Fog-Charcoal

30M301
Charcoal/
Charcoal-Grey

930930
Charcoal/Charcoal

930992
Charcoal/Garnet



Sun Control Textiles™

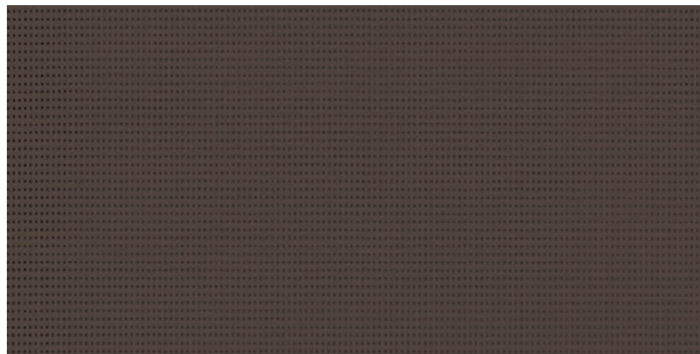
Soltis
Horizon 86

Serge Ferrari

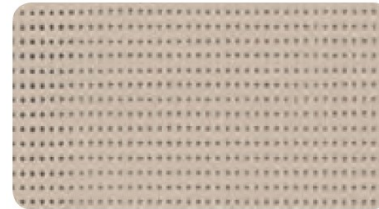
14 % Open Screen Mesh

Exterior Screen Fabric

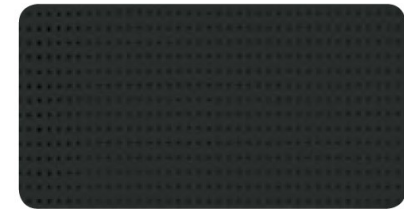
5 year warranty from Ferrari



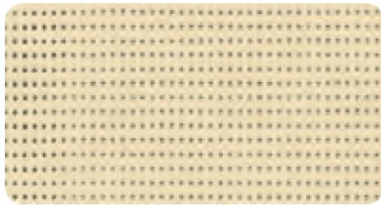
86-2043
Bronze



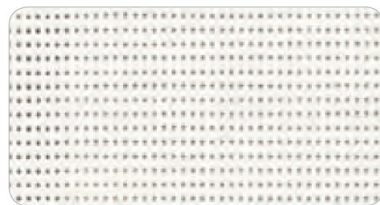
86 – 2135
Sandy Beige



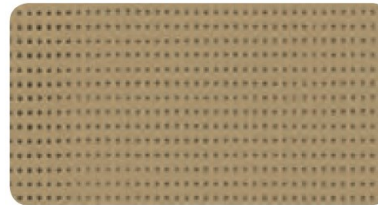
86 – 2053
Black



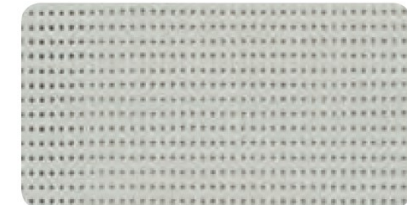
86 – 2175
Champagne



86 – 2044
White



86 – 2012
Pepper



86 – 2171
Boulder

■ **Technical properties**

| | |
|----------------|----------------------------------------|
| Openess factor | 14% |
| Weight | 380 g/m ² — 11.2 oz/sqyd |
| Thickness | 0.45 mm — 450 microns |
| Width | 177 cm - 267 cm — 69.7 in. - 105.1 in. |

Superior elongation and tear resistance

No deformation during processing and use

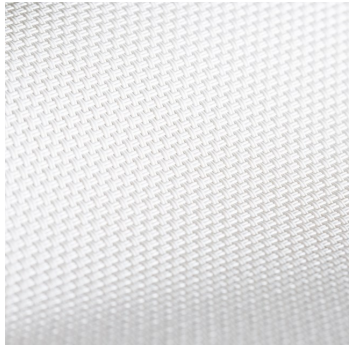
Superior aesthetic and mechanical durability

Smooth finish easy to clean, space saving, easy rolling

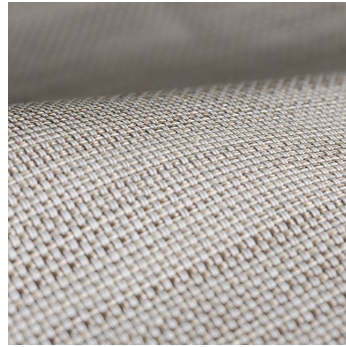
Exterior Screen Fabric



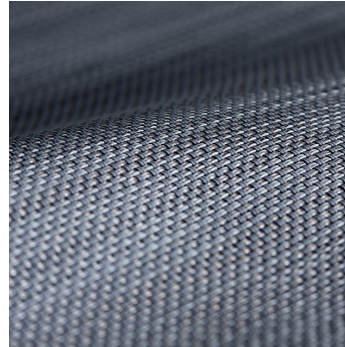
5 % Open Screen Mesh



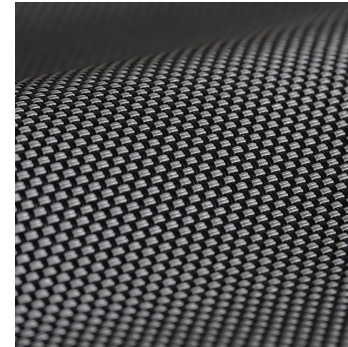
White



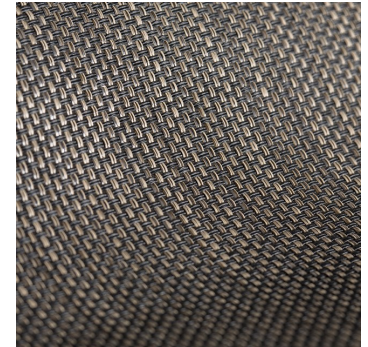
Stone Texture



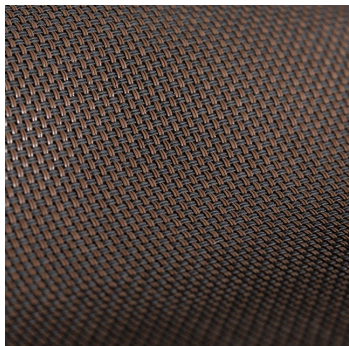
ShadowTexture



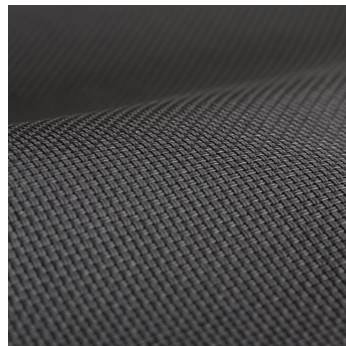
Granite



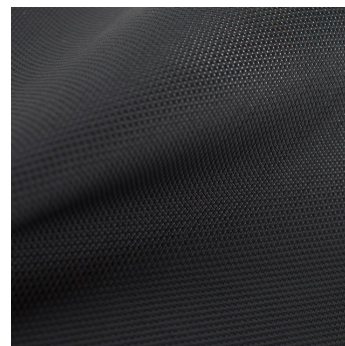
Espresso Texture



Tobacco



Charcoal



Flat Black



Bone

TEXTILENE® nano™ 95 is a durable, yet lightweight synthetic fabric. It is lighter and finer with the same technical qualities as the original TEXTILENE®. TEXTILENE® nano™95 is excellent for exterior use and can reduce energy costs while blocking up to 95% of the sun's harmful rays.



MOTORIZATION

POWERED by
somfy



Awnings



Exterior Screens



Pergolas



Roller/Solar Shades

Sunair is proud to offer the full line of Somfy motors and controls for our awnings and screens program. SOMFY RTS features motors with an integrated radio receiver that allows you to operate the awning by remote control with a wall mounted or hand held remote or by smart phone device. With a simple click of your remote, the awning or shade will extend or retract automatically. The manual override Sunea motor is ideal for awnings and the Altus motors is ideal for exterior screens. Each motor can be configured with a cord & plug which can simply be plugged into your patio outlet. They are available in 1.4", 11', 17', & 23' lengths. Altus motor cords depend on motor model and is standard either 6' or 10' pigtail cords. Optional Altus plug in cords are available in 10', 18', and 24' lengths. Optional screen motor is Maestria with obstacle detection. Add Tahoma smart phone and table interface.



ALTUS®

SOMFY REMOTES:



Telis 1 & 4 RTS
Hand-held Remotes



Situ 1 & 4 hand
held remotes

One (1) through (16) channel hand held or wall mounted remotes are available. Remotes are available in different colors to suit your style, please inquire.



Telis hand-held remotes offer convenient and simple operation of every type of motorized application. Channels help organize the motorized products that are operated. Single channel remotes can operate one individual product or one group of motorized products. Multiple channel remotes can handle groups of motorized products.



Telis 1 Chronis
RTS Timer



DecoFlex WireFree™ RTS
Wall Switches



Telis 1 Patio for
exterior use



Smooove® 1 RTS
Surface Mount Wall Switch



Telis 16 RTS
Hand-held Remote

AVAILABLE AUTOMATIC SENSORS & CONTROLS



SOLIRIS RTS 24V KIT

Sun & Wind Sensor

The Soliris RTS Sun and Wind Sensor automatically controls your RTS motorized products based on current weather conditions.



ONDEIS® WIREFREE

Sun & Rain Sensor

The Rain Sensor is a solar-powered combined rain and sun sensor compatible with Radio Technology Somfy® motorized exterior products, including awnings and screens.



**Sunis & ThermoSunis
Indoor WireFree™ RTS Sensors**



SOMFY MOTOR WIRING



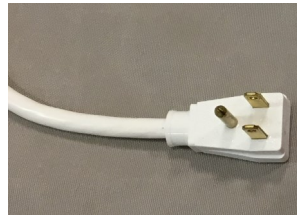
Radio Technology Somfy

Radio Technology Somfy® (RTS) allows wireless radio control of motorized applications via the RTS family of controls.



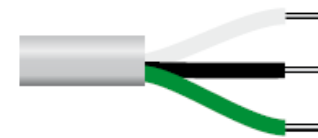
The three (3) wire cords can be wired in parallel and can be ordered with a molded plug to simply plug into an exterior UL approved GFI outlet. The standard four (4) wire cords must be hard wired with a traditional toggle wall switch. Screens can not be ordered with molded plugs on the end.

Optional molded plug is available for "awning" motors only



Type of power cable **RTS plug in capable motor cord**

RTS
120V AC / 60Hz
3 conductor cable



white = neutral
black = hot
green = ground

All Somfy Motors are UL and CSA Recognized

- All SOMFY motors are UL Recognized and can be found under the following file numbers:
E60495, E60888, E63714



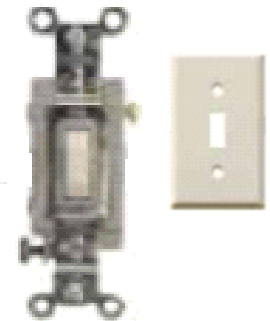
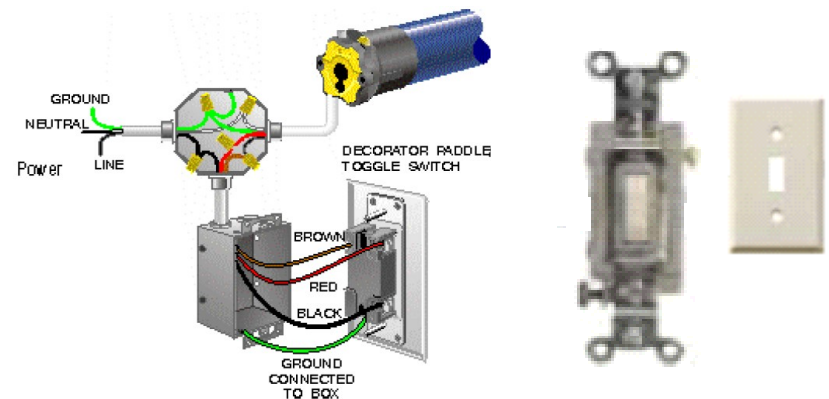
Type of power cable **STANDARD Hardwire motor cord**

Wired
120V AC / 60Hz
4 conductor cable



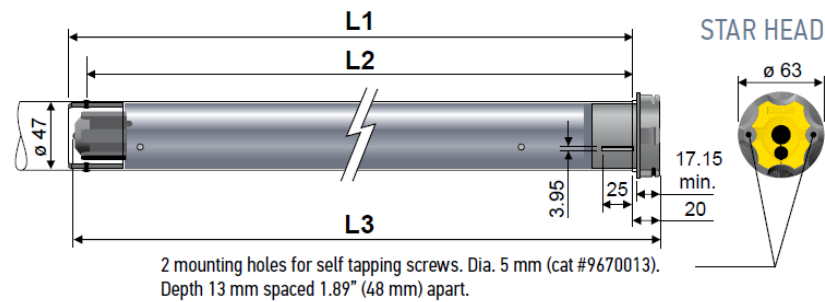
white = neutral
red = direction 1
black = direction 2
green = ground

Hardwired motors with a wall switch





Dimensions



LT50 Altus[®] RTS

| 506 | 510 | 525 | 535 | 550 |
|-------------|-------------|-------------|-------------|-------------|
| 6 Nm | 10 Nm | 25 Nm | 35 Nm | 50 Nm |
| 120V / 60HZ | 120V / 60HZ | 120V / 60HZ | 120V / 60HZ | 120V / 60HZ |
| 1.1A | 1.3A | 1.6A | 2.1A | 2.1A |
| 38 rpm | 38 rpm | 20 rpm | 20 rpm | 14 rpm |

Somfy TaHoma® RTS Smartphone and Tablet Interface

The Somfy TaHoma® gateway and smart phone app provides convenient and customized control of Somfy powered motorized shades, blinds, and other motorized solutions. Control up to 40 RTS (Radio Technology Somfy) channels using the TaHoma app. Multiple TaHoma devices can be joined for multi-zone control.



- North America app, you can remotely activate both Zigbee and RTS products Supports UP/DOWN/MY/STOP commands for motorized shades/blinds .
- Supports incremental control for Tilt motors and lighting ☑ Supports ON/OFF commands for control of lighting or other devices powered via the Zigbee Smart Plug Multiple users .
- Remote access Control4® Certified ☑ Integration with third-party systems over IP ☑ Compatible with Somfy Synergy™ API



TaHoma® RTS



Bond Home / Smartphone and Tablet Interface

Bond Bridge and Bond Bridge Pro works as a bridge between Wi-Fi and your remotes recorded signal allowing you to operate your Sunair shades, awnings, pergolas, ceiling fans, fireplaces and more with the Bond app. Works with Somfy and other motor manufacturers.



Bond Bridge

- Works with Alexa, Google Home, and SmartThings,
- Remote Control via Bond Home app
- Works with iPhone or Android
- No installation needed
- Smart home functionality without breaking the bank

Bond Bridge Pro: *Added features...*

- Ethernet port & PoE technology
- Smart home integrations
- Ceiling and wall mount

Remote control from anywhere

Be able to control everything
even from outside your home.



OPTIONAL:

- Sidekick for Shades: 5-channel Shade and awning

BOND REMOTE SWITCH:

Sidekick for Shades/Awnings: 5-channel Shade Keypad

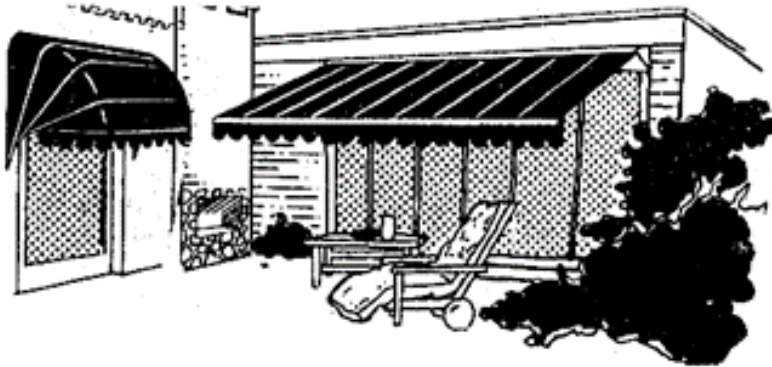


- Wireless flush mount shade remote.
- Communicates directly with the shade.
- 10-year battery life.
- Set up shade limits – no manufacturer remote required.
- This version of Sidekick does not support Scene Keypad functionality.
- 10-year battery life.
- Install with or without a workbox (flush mount).
- 5-channel control.
- Set up shade limits – no manufacturer remote required.



Notes

**Note: Sunair® reserves the right to change engineering, specifications and prices without notice.
Images and Illustrations in the catalog may vary from digital and printed manuals.**



SUNPROOFING AMERICA!



MARYLAND LOCATION

Mailing: P.O. Box 1068
Shipping: 7785 Rt. 175
Jessup, MD 20794

Toll Free 800 - 548 - 0408
Phone: 410 - 799 - 1145
Fax: 410 - 799 - 5584

ARIZONA LOCATION

Mailing: Same as Jessup
Shipping: 3807 West Thomas Rd.
Phoenix, AZ 85017

Toll Free 877 - 272 - 3920
Phone: 602 - 272 - 3920
Fax: 602 - 272 - 3925

www.sunairawnings.com

info@sunairawnings.com