

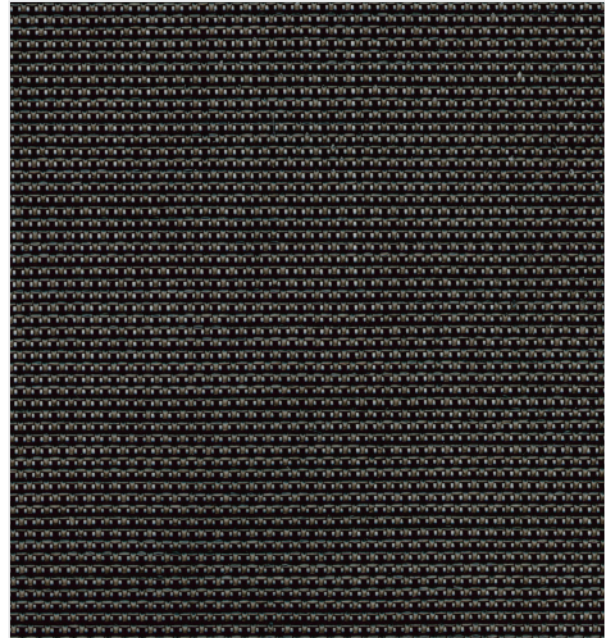
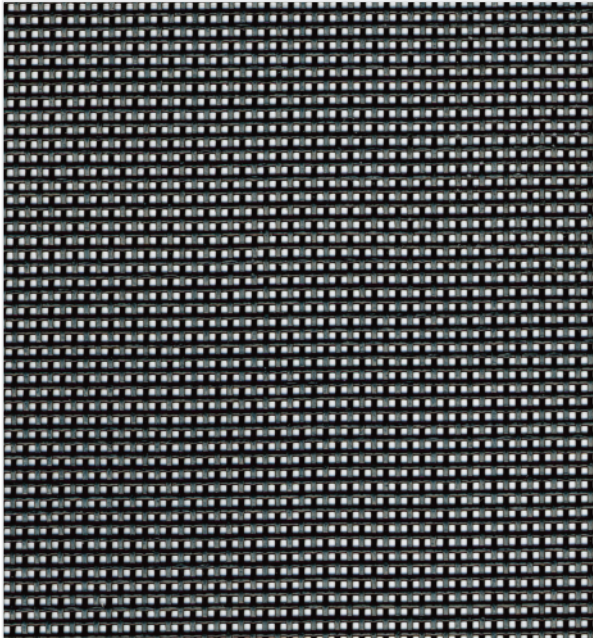
Exterior Sun Control Fabrics



Phifer
SunTex
HEAVY-DUTY SHADING FABRIC

Phifer
SunTex® 80

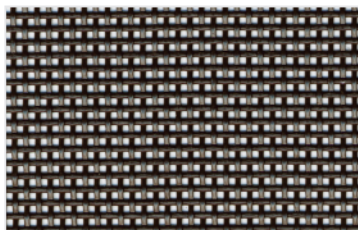
Phifer
SunTex® 90



Black

Black

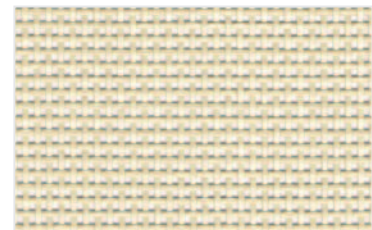
SUNTEX 80 AND SUNTEX 90 ARE ALSO AVAILABLE IN THE COLORS SHOWN BELOW.



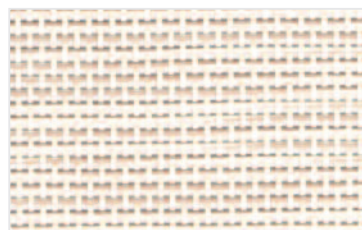
Brown



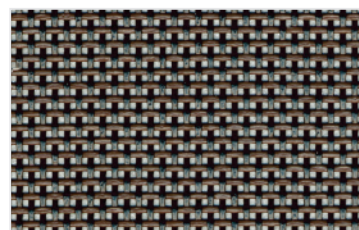
Grey



Beige



Stucco



Dark Bronze

SunTex® 80 & SunTex 90



Specifications

■ SunTex exterior shading fabric is made of strong vinyl-coated polyester. Developed originally for use in outdoor furniture, SunTex is mildew and fade resistant and needs only an occasional cleaning with mild soap and water. Ideal for use as a shading fabric on windows, doors and porches, SunTex is also pet resistant.

Fire Classification: California Technical Bulletin 117 Sec. E. (CS-191-53), NFPA 101 (Class A Rating), and IBC Section 903.1 (Class A Rating)

Bacteria and Fungal Resistance: ASTM E 2180 and ASTM G21; includes Microban antimicrobial additives

Environmental Certification: Certified to GREENGUARD and GREENGUARD Gold standards for low chemical emissions into indoor air during product usage

Lead Free: RoHS / Directive 2002/95/EC, US Consumer Product Safety Commission Section 101, ANSI/WCMA A100.1-2007 for lead content, and REACH (EC 1907/2006) compliant

UV Protection: Seal of approval by the Melanoma International Foundation (MIF) for effectiveness in preventing sun damage to the skin or eyes (SunTex 90)

Warranty: 10-year exterior



PRODUCT CERTIFIED FOR
LOW CHEMICAL EMISSIONS
UL.COM/GG
UL 2818



Microban® antimicrobial protection inhibits the growth of stain-causing bacteria, mold and mildew on the shade.



SunTex 80

Blocks up to 80% of the sun's heat

Standard Widths: 36", 48", 60", 72" and 96"

(91.4cm, 121.9cm, 152.4cm, 182.9cm and 243.8cm)

Standard Roll Length: 100 Linear Feet (30.48m)

Composition: 31% Polyester, 69% Vinyl on Polyester

Mesh Weight: 13.5 (oz/yd²)

Fabric Thickness (in): .040

Openness Factor: Approximately 25%

UV Blockage: Approximately 75%

Breaking Strength (lb): 400 Warp, 380 Fill

Stiffness (mg): 500 Warp, 300 Fill

SunTex 90

Blocks up to 90% of the sun's heat

Standard Widths: 36", 48", 60", 72" and 96"

(91.4cm, 121.9cm, 152.4cm, 182.9cm and 243.8cm);

120" (304.8cm) in all colors except Grey

Standard Roll Length: 100 Linear Feet (30.48m);

90 Linear Feet (27.43m) for 120" rolls

Composition: 31% Polyester, 69% Vinyl on Polyester

Mesh Weight: 17.2 (oz/yd²)

Fabric Thickness (in): .039

Openness Factor: Approximately 10%

UV Blockage: Approximately 90%

Breaking Strength (lb): 480 Warp, 340 Fill

Stiffness (mg.): 400 Warp, 310 Fill

* Performance evaluations conducted by Matrix, Inc., Mesa, Arizona.

TS = Solar Transmittance
RS = Solar Reflectance
AS = Solar Absorptance
1/8 CL = 1/8" Clear Glass
1/4 CL = 1/4" Clear Glass
1/4 HA = 1/4" Heat Absorbing Glass
1/2 CL = 1/2" Clear Glass
1 CL = 1" Clear Glass
1 HA = 1" Heat Absorbing Glass

The solar optical properties are used to calculate the solar heat gain coefficient (SHGC). The SHGC represents the percentage of solar heat gain that is transferred to the interior through the glass and shading system. Dark colors provide maximum glare reduction and visibility. For test references and technical definitions visit us at www.phifer.com.



P. O. BOX 1700 • TUSCALOOSA, ALABAMA 35403-1700 U.S.A.
PHONE: 205/345-2120 • TOLL FREE 1/800-633-5955
FAX: 205/759-4450 • www.phifer.com

Solar Heat Control Properties of Phifer SunTex 80 Fabrics Installed Externally, Thirty-Degree Profile Angle

Color	*Solar Optical Properties			Solar Heat Gain Coefficient (SHGC) w/					
	TS	RS	AS	Single			Insulating		
	1/8CL	1/4CL	1/4HA	1/2CL	1CL	1HA			
Brown	22	5	73	0.27	0.27	0.25	0.22	0.22	0.20
Black	24	4	72	0.29	0.29	0.24	0.24	0.23	0.21
Grey	26	24	50	0.29	0.28	0.24	0.24	0.23	0.21
Stucco	31	39	30	0.30	0.30	0.29	0.27	0.26	0.23
Beige	28	31	41	0.30	0.29	0.27	0.25	0.24	0.22
Dark Bronze	24	5	71	0.29	0.29	0.27	0.24	0.23	0.21

Solar Heat Control Properties of Phifer SunTex 80 Fabrics Installed Externally, Seventy-Five-Degree Profile Angle

Color	*Solar Optical Properties			Solar Heat Gain Coefficient (SHGC) w/					
	TS	RS	AS	Single			Insulating		
	1/8CL	1/4CL	1/4HA	1/2CL	1CL	1HA			
Brown	6	16	78	0.11	0.11	0.11	0.08	0.08	0.08
Black	7	15	78	0.12	0.12	0.12	0.08	0.08	0.08
Grey	11	51	38	0.10	0.10	0.10	0.06	0.06	0.06
Stucco	21	53	26	0.15	0.15	0.15	0.09	0.10	0.10
Beige	19	46	36	0.15	0.15	0.15	0.10	0.10	0.10
Dark Bronze	7	9	84	0.12	0.12	0.12	0.09	0.09	0.09

Solar Heat Control Properties of Phifer SunTex 90 Fabrics Installed Externally, Thirty-Degree Profile Angle

Color	*Solar Optical Properties			Solar Heat Gain Coefficient (SHGC) w/					
	TS	RS	AS	Single			Insulating		
	1/8CL	1/4CL	1/4HA	1/2CL	1CL	1HA			
Brown	11	5	84	0.18	0.18	0.17	0.15	0.14	0.13
Black	11	4	85	0.18	0.18	0.17	0.15	0.15	0.13
Grey	11	26	63	0.16	0.16	0.13	0.13	0.13	0.11
Stucco	17	46	37	0.19	0.19	0.17	0.16	0.16	0.14
Beige	13	36	51	0.16	0.16	0.16	0.14	0.14	0.12
Dark Bronze	11	5	84	0.18	0.18	0.17	0.15	0.14	0.13

Solar Heat Control Properties of Phifer SunTex 90 Fabrics Installed Externally, Seventy-Five-Degree Profile Angle

Color	*Solar Optical Properties			Solar Heat Gain Coefficient (SHGC) w/					
	TS	RS	AS	Single			Insulating		
	1/8CL	1/4CL	1/4HA	1/2CL	1CL	1HA			
Brown	2	14	84	0.10	0.10	0.10	0.07	0.07	0.07
Black	2	13	85	0.10	0.10	0.10	0.07	0.07	0.07
Grey	4	34	62	0.09	0.09	0.09	0.06	0.06	0.06
Stucco	12	62	26	0.10	0.10	0.10	0.06	0.06	0.06
Beige	9	51	40	0.10	0.10	0.10	0.06	0.06	0.06
Dark Bronze	2	10	88	0.10	0.10	0.10	0.07	0.07	0.07

© PHIFER INCORPORATED V15 3009031
® SunTex is a registered trademark of PHIFER INCORPORATED.
™ UL, the UL logos and the UL mark are trademarks of UL LLC.
© MICROBAN is a registered trademark of Microban Products Company.