

SUNAIR®

HAS THE RIGHT RETRACTABLE AWNING SYSTEM FOR YOU!



EXPAND YOUR OUTDOOR LIVING SPACE AND MORE...

A SUNAIR® Lateral Arm Awning offers the ideal solution for creating a comfortable outdoor environment the whole family can enjoy. Imagine staying cool on your deck and protecting your family from the sun's harmful rays. Finally you can enjoy cookouts and entertaining the way it is meant to be with a Sunair® Retractable Awning.

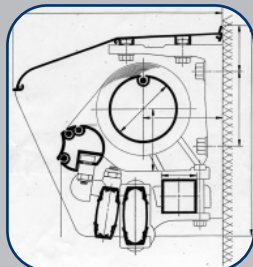
ADDED BENEFITS!

- Energy savings - reducing cooling energy
- Sun protection from harmful UV rays
- Add value to your home without the cost of a permanent installation



www.SunairAwnings.com

Sunstar®



- Robust lateral arm awning
 - Double cable arm design
 - Forged elbow, shoulder and arm components
 - 7:1 worm gear with stop
 - Aluminum support and roller tube
 - Motorized or manual
 - 8yr year limited frame warranty
 - Optional aluminum hood system
- Frame colors: white, mocha, and ivory

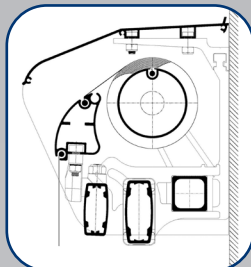
Max Size:

24 ft. Wide

11' 6" Projection

OPTIONAL: Valance Plus Roll down front valance 4 ft Manual control

Sunair®



- Highest quality lateral arm awning
 - Forged elbow, shoulder and arm components
 - Double cable arm design components
 - 4:1 / 8:1 bevel gear with stop for most efficient operation
 - Aluminum support and roller tube
 - Motorized or manual
 - 15yr year limited frame warranty
 - Optional aluminum hood system
 - PVC coated Stainless steel cable standard
- *available in all (9) frame colors and custom RAL Colors as well (Inquire with Sunair)*

Max Size: 35 ft. Wide

14' Projection

(special order wider units)

OPTIONAL: Valance Plus Roll down front valance 4 ft Manual or Motorized control

Suntube®



- Highest quality lateral arm awning
 - Double cable arm design
 - Forged elbow, shoulder and arm components
 - 4:1 / 8:1 bevel gear with stop for most efficient operation
 - Aluminum support and roller tube
 - Motorized or manual
 - 15yr year limited frame warranty
 - Semi-cassette enclosure
 - Stainless steel cable standard
- *available in all (9) frame colors and custom RAL Colors as well (Inquire with Sunair)*

Max Size:

20 ft. Wide

13' Projection

FRAME COLORS & MOTOR OPTIONS



Frame colors may vary due to the printing process.
CUSTOM COLORS ARE AVAILABLE



Standard Switch Remote Control



A standard wall switch or remote control is available with the optional SOMFY® motors. The Ondeis and EOLIS automatically extends and retracts your awning with the sun and wind.



All Sunair® awning models are sewn with Tenara® thread. This thread is made from Teflon which will not deteriorate from sun exposure.

Call Us for a FREE in-home estimate!



AUTHORIZED DEALER:

www.SunairAwnings.com

Sunair® reserves the right to change engineering without notice ©2012 Sunair® Awnings & Screens.

Sunair® Awnings, 7785 Rt. 175 Jessup, MD 20794
©2021 Awnings Unlimited Inc.
Jessup, MD 410.799.1145 Phoenix, AZ